
The right ETF starts with the right index

Deeper knowledge about how indices work can drive better portfolio outcomes for wealth advisors



**FTSE
RUSSELL**
An LSEG Business



Contents

01. Introduction	4
02. What is an index?	5
03. Indices as basis for investment vehicles	7
04. The key to an ETF's power? An "investable" index	9
05. ETF ecosystem	11
06. Common ETF considerations for client portfolios	12
07. About FTSE russell	14
08. Whitepapers on flagship indices underlying ETFs and research reports	20
09. Frequently asked questions	21



All of your clients want positive outcomes.

But each client has unique objectives—no two investors share the same goals, time horizon, and risk profile.

How can you improve outcomes for a wide segment of clients and gain a competitive advantage?

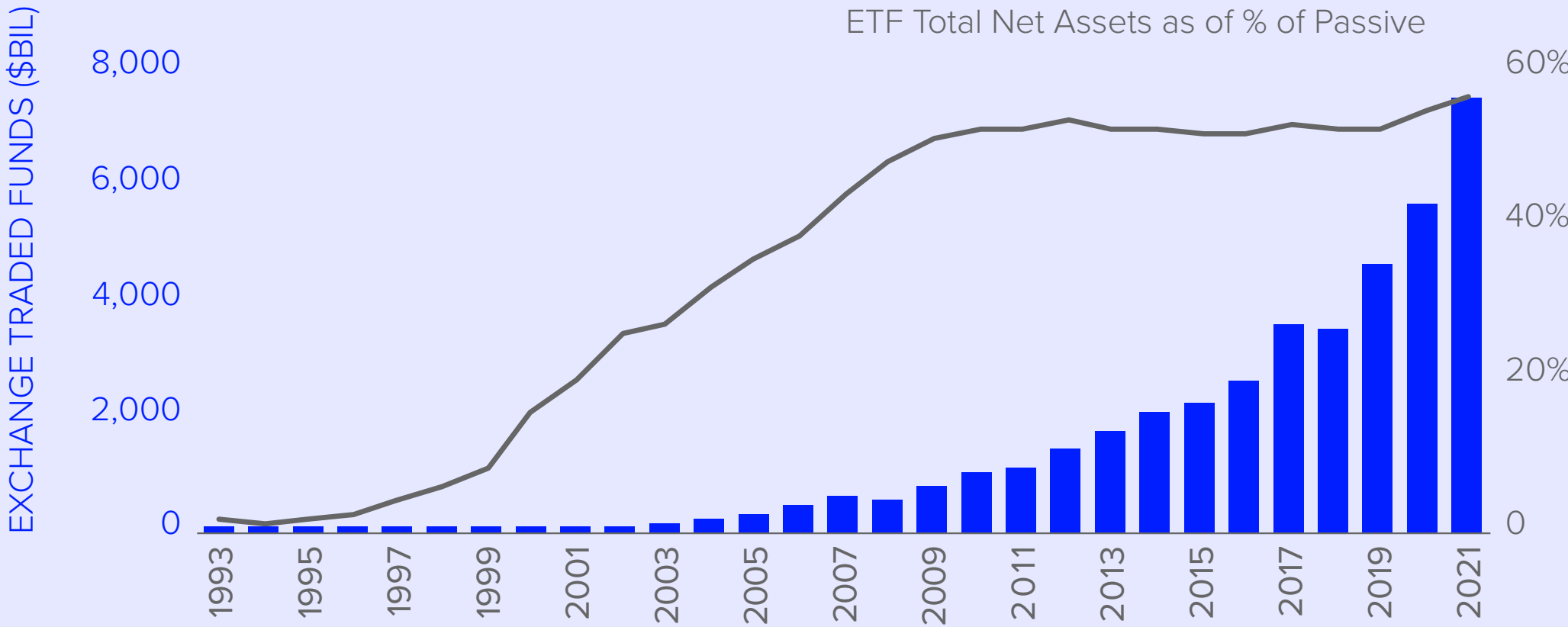
A better understanding of the indices that underlie your passive strategies can help.

Indices are power Exchange Traded Funds (ETFs), and all indices are not created equally.

ETFs' steady growth

When constructing portfolios, wealth advisors rely on passive strategies both for their ability to accurately capture targeted exposures and for the cost-efficiency. There are many different passive strategies to choose from, but having so much choice for each situation can be confusing.

Passive market share has grown in large part due to ETFs



Source: Lipper, Date range: 1/1/1993-12/31/2021.

The right ETF starts with the right index

Understanding how indices work reveals the capabilities of ETFs

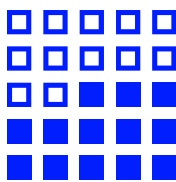
Helping your clients achieve their goals requires time and research. But that hard work is easier when you understand how indices work—it helps you make smart portfolio choices. And when you know an ETF is based on a FTSE Russell index, that tells you a lot about how accurately that index represents the selected market, as well as the investability features of the index.

First, a quick primer:

What is an index?

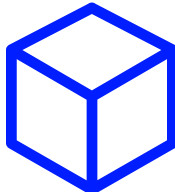
An index is a basket of securities that are selected based on specific criteria and aim to track a market or other investment segment—for example, a sector, industry, or characteristic. Indices are designed and maintained to accurately reflect the risk/return profile of their selected criteria, and used as tools for asset allocation decision making, portfolio construction (manager universe), risk analysis, reporting and ongoing review.

KEY TERMS



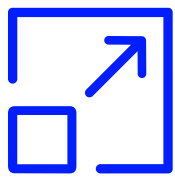
Basket

The exact compilation of securities in an index



Weighting

The proportion of the index that each individual security comprises



Value

A single number that, when referenced to a starting value (or level), describes how the index has performed over time

Why indices?

Markets or individual market sectors can be enormous, including hundreds and even thousands of securities.

Buying all these securities just to access one market or trend can be expensive and time-consuming. And it can be ineffective. That approach inevitably would include securities with negligible influence on the portfolio.

Indices are comprised of only the securities most relevant to their investment theme, allowing you to follow market trends without having to track the entire available universe of securities. Essentially, an index acts as a yardstick, capturing representative exposure to a particular market or sector.

LARGE-CAP GLOBAL STOCKS	NORTH AMERICAN OFFICE REITs
EMERGING MARKETS BONDS/ DEBT	AND MORE...

Chances are, if you can imagine it, there's an index for it. And you can use indices in a variety of ways:



- Assess a given market's performance
- Gauge how well an active strategy is working
- Serve as the foundation for investment products, such as ETFs or mutual funds
- Evaluate a market's risk profile or its diversification benefits
- Measure passive risk premia

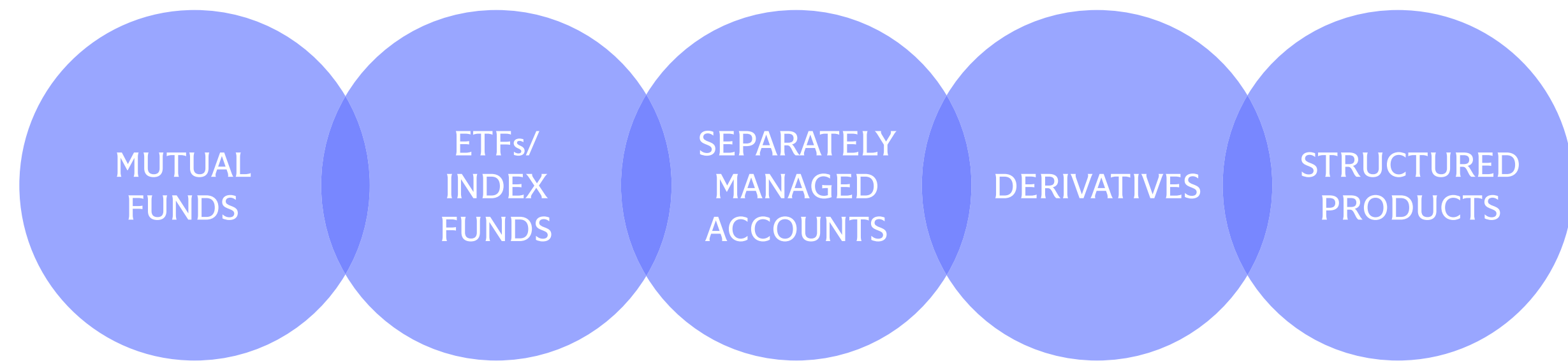
The right ETF starts with the right index



Indices as the basis for

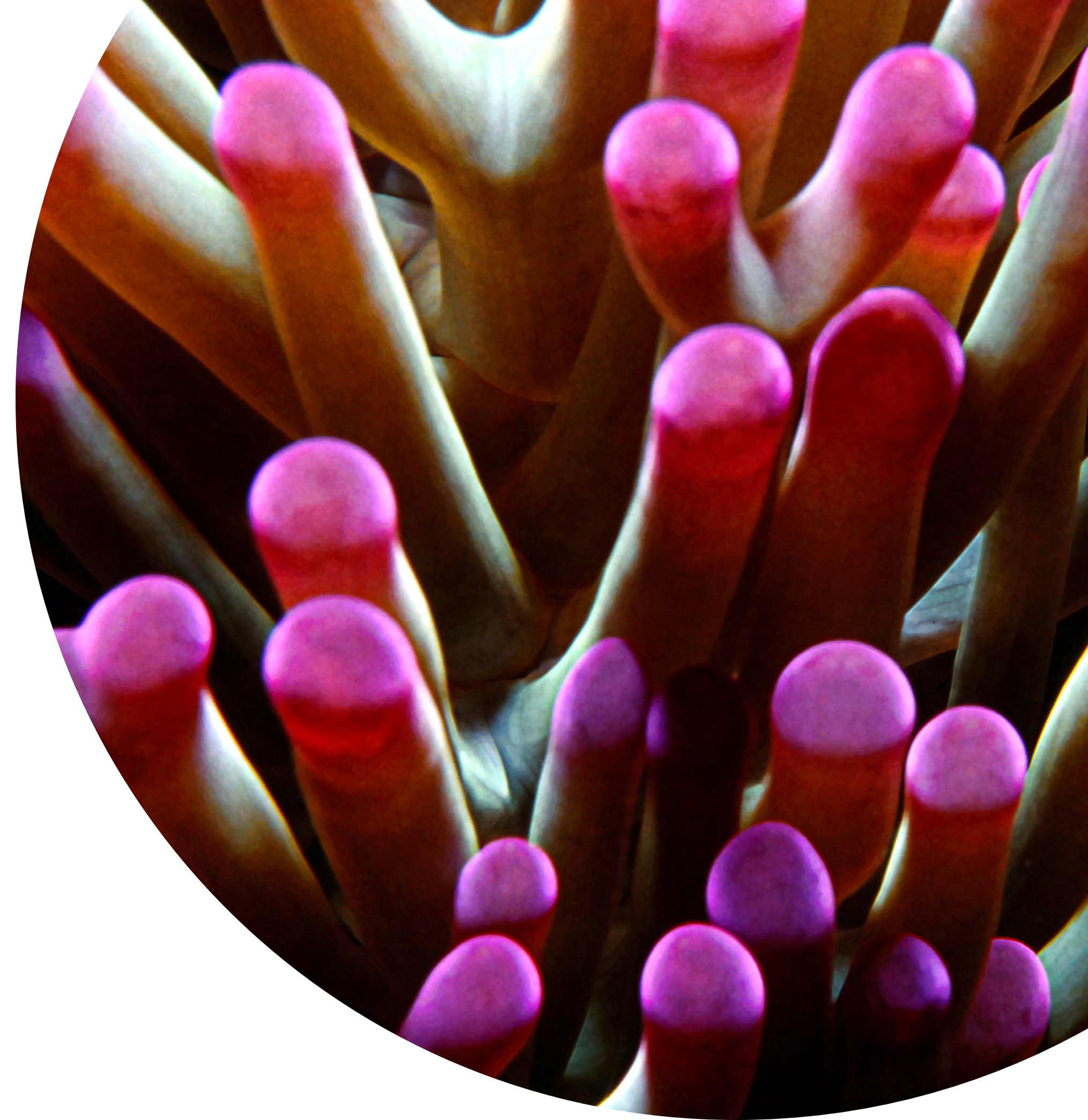
Investment vehicles

Because an index is a hypothetical basket of securities, it cannot be invested in directly. However, indices are often licensed by fund managers to be used as the basis for passively invested products that track an index, such as:



Let's say you feel strongly that the large-cap US equity market is going to outperform the small-cap US equity market over the long term. In that case, you may seek to have exposure to only the large-cap equities market.

Rather than purchasing each US large-cap stock individually, you adopt a passive strategy. You choose an investment product that tracks an index designed to precisely represent just the US large-cap equities market.



Choosing passive investment products

While some investors prefer actively managed investments, which rely on a manager's stock selection skills, others turn to passively managed investment products for the following reasons:



Representation



Since the goal of the investment vehicle is to target a particular market or market segment, the chosen index should be as representative of this market segment as possible.

Simplicity



Passively managed index products are comprised of the same securities and at the same weights as the index on which they are based. That makes it easy to track and measure performance.

Lower cost



Passively managed investments that track equity indices typically cost less than their actively-managed counterparts. They have lower (or no) transaction costs or fees because there isn't a manager to make investment decisions based on expertise, opinions and analysis.

Objective and transparent



When an investment vehicle is replicating the index, it's important that the index's rules and calculation methodology are published openly. You should be able to understand and anticipate changes to the index.

Investable



The index should only include securities that are freely available for purchase by average investors, rather than those held by employees or other investors who are restricted from selling their shares. Otherwise, replicating the index can be difficult, and unnatural stock price spikes can occur.

As index solutions continue to expand and evolve, you can rely on us to offer tools to help you achieve your investment goals.

The key to an ETF's power? An “investable” index

UNDER THE HOOD WITH **MARK BARNES**

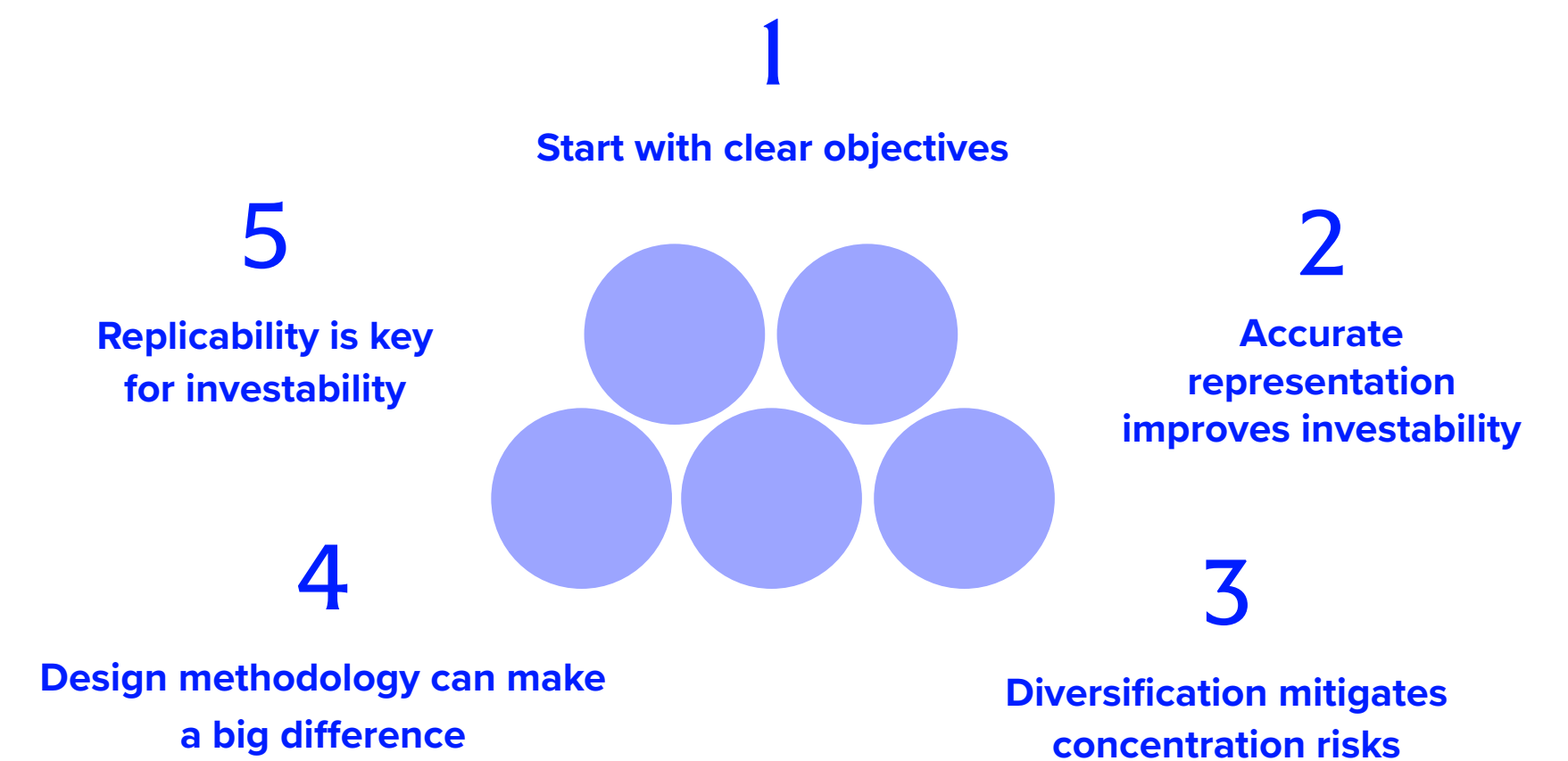
HEAD OF INVESTMENT RESEARCH, AMERICAS, GLOBAL INVESTMENT RESEARCH, FTSE RUSSELL

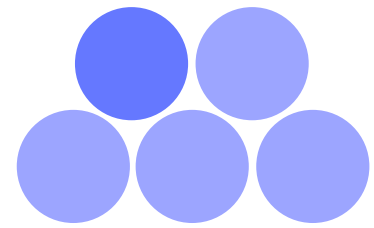


It is imperative that ETF product developers as well as fund selectors and analysts in the wealth space grasp how index selection can impact an investment product's ability to meet its objectives.

What makes an index investable?

Before embarking on any journey for an exchange-traded product, providers must consider core index construction tenets that serve as a strong foundation for investability.





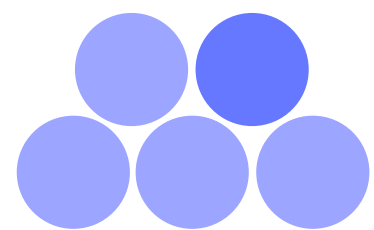
1 Start with clear objectives

From the outset, ETF providers must define a clear vision of their goals, such as enhancing return, lowering volatility, or achieving targeted factor exposure(s). Then product providers and index engineers work together to map all the requirements and characteristics of an underlying index. Best practice is to design that index with a long view toward investability, ensuring the original objectives can be maintained over time.

EXAMPLE

The Russell 1000 Index has the objective of tracking the top 1,000 US equities by market cap

When designing an index, practical, real-world implementation issues must be considered. It has to be investable, meaning an investment product replicating the index can be traded in the market efficiently, and at a high capacity.



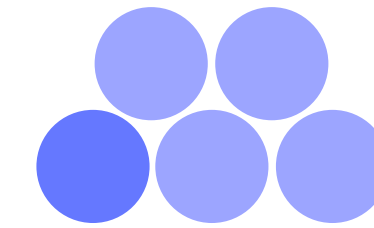
2 Accurate representation improves investability

It is important to assess indices from multiple angles—not just market performance. An index that effectively represents a market does so by delivering an unbiased, complete view of the market or market segment it is designed to measure. This is only accomplished through the application of an objective, transparent construction methodology. Arbitrarily excluding opportunities available to market participants can impact the weights of index members. Differences in weights and returns can impact index performance.

The introduction of constraints can be a useful safeguard against any unwanted extreme positions. In other words, an investable index must be “true-to-label.”

EXAMPLE

The Russell 3000 Index represents the top 3,000 investable stocks in the US stock market

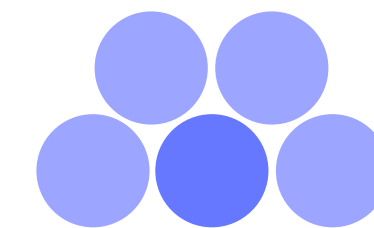


3 Diversification mitigates concentration risks

To achieve a stated objective, any index runs the risk of becoming overly concentrated. Naturally, its design can start to resemble an active approach relative to the market capitalization of the benchmark. Ensuring appropriate levels of diversification within an index can mitigate potential sector, country, or stock-specific concentration risks.

EXAMPLE

FTSE Global RIC Capped Indices were built to help investors meet concentration and diversification requirements



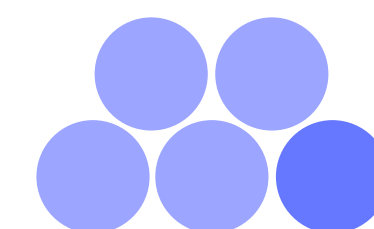
4 Design methodology can make a big difference

Index providers differ in their build methodologies. Each brand brings their own toolkit to design for particular objectives. In the process, trade-offs are made along the way: targeted factor exposure vs diversification, simplicity vs complexity, etc.

Investability relies on the most efficient methodology that most closely meets the stated objectives.

EXAMPLE

FTSE Fixed Income Indices are designed to appeal to a broad range of market participants and are widely followed by the investment community



5 Replicability is key for investability

A popular criticism of the latest generation of indices (e.g. smart beta) is they rely on theoretical academic analysis and on back-tested data to simulate attractive performance outcomes. Investability relies on practical, real-world implementation issues; i.e., an investment product replicating the index can be traded in the market efficiently, and at a high capacity. Index design addresses many questions, such as: Can the fund manager trade the number of stocks? Is that market segment liquid enough? What are the turnover and likely trading costs? The most investable indices are tempered by reality.

EXAMPLE

The Russell 2000 Index aims to accurately measure the performance of the small-cap segment of the US equity market

Three essential groups and roles

Do you have the tools and information you need to consider all of your opportunities across markets, asset classes, styles or strategies? As indices and portfolio strategies continue to evolve, you need an index provider who helps you stay well-informed. FTSE Russell is an integral part of the global ETF industry, providing indexing and data solutions to a wide variety of market participants.

Index providers

Key services: indices, benchmarks, and asset class proxy

Index data is licensed to an ETF sponsor who then replicates the index into an ETF

ETF sponsors

Manage and promote ETFs

ETF administrators

Day-to-day operation of the ETF

SEC and CFTC

Monitor, report, and investigate all aspects of the ETF ecosystem

Distributors

Increase the availability of ETFs to investors

Auditors

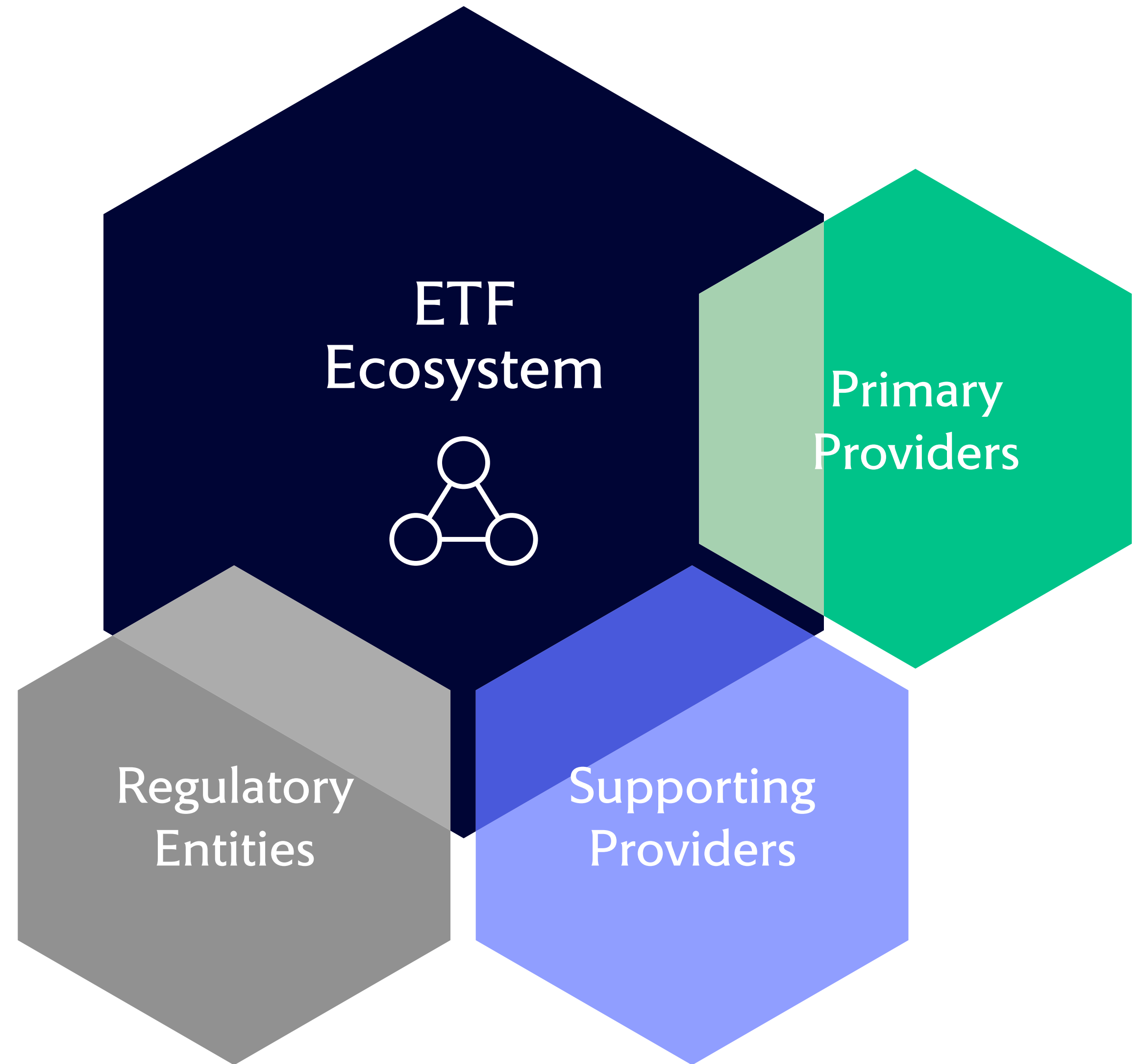
Audit for accounting and regulatory requirements

Fund counsel

Legal guidance and opinion

Advisors

Provide ETF investment advice to investors directly

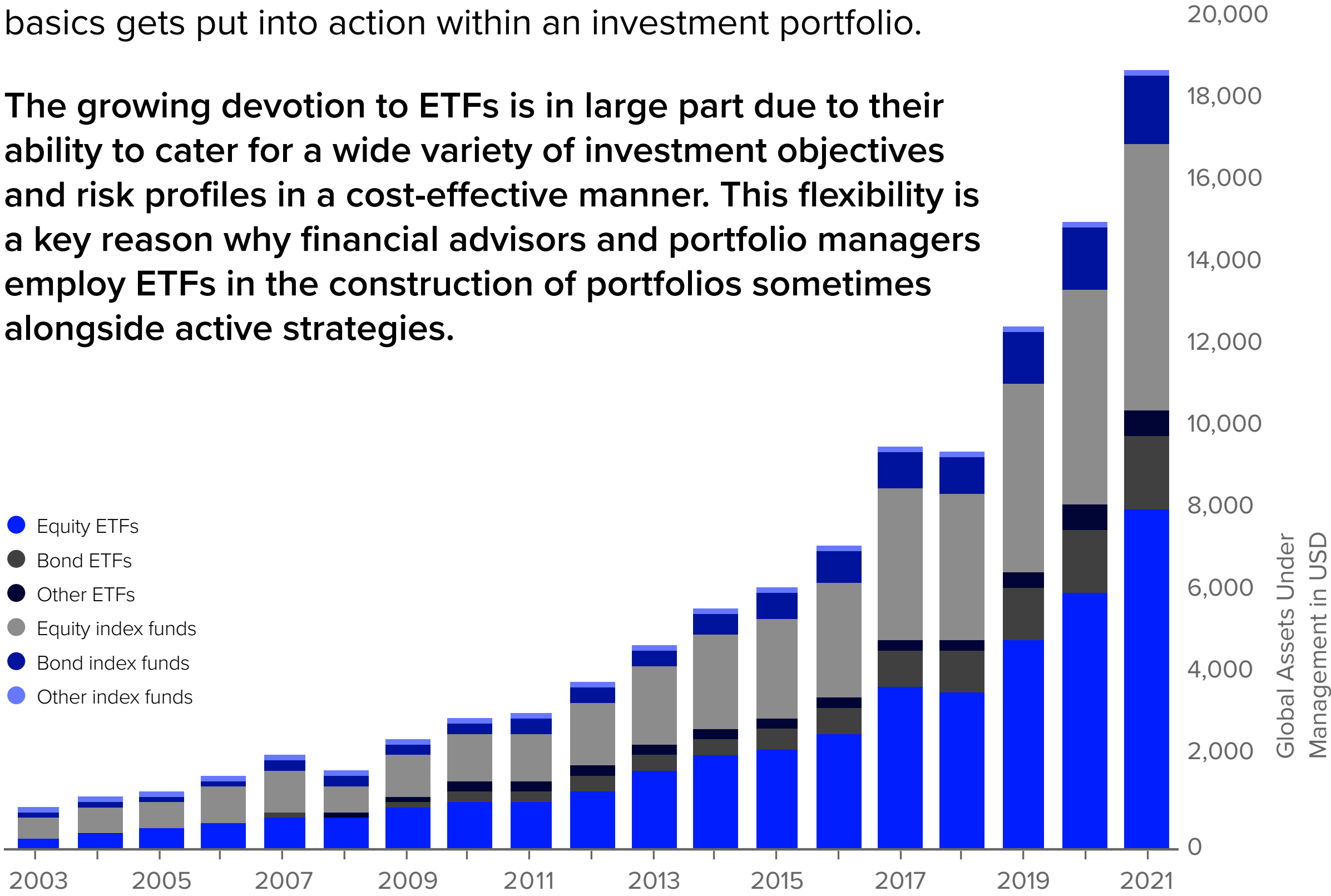


Common ETF considerations

For client portfolios

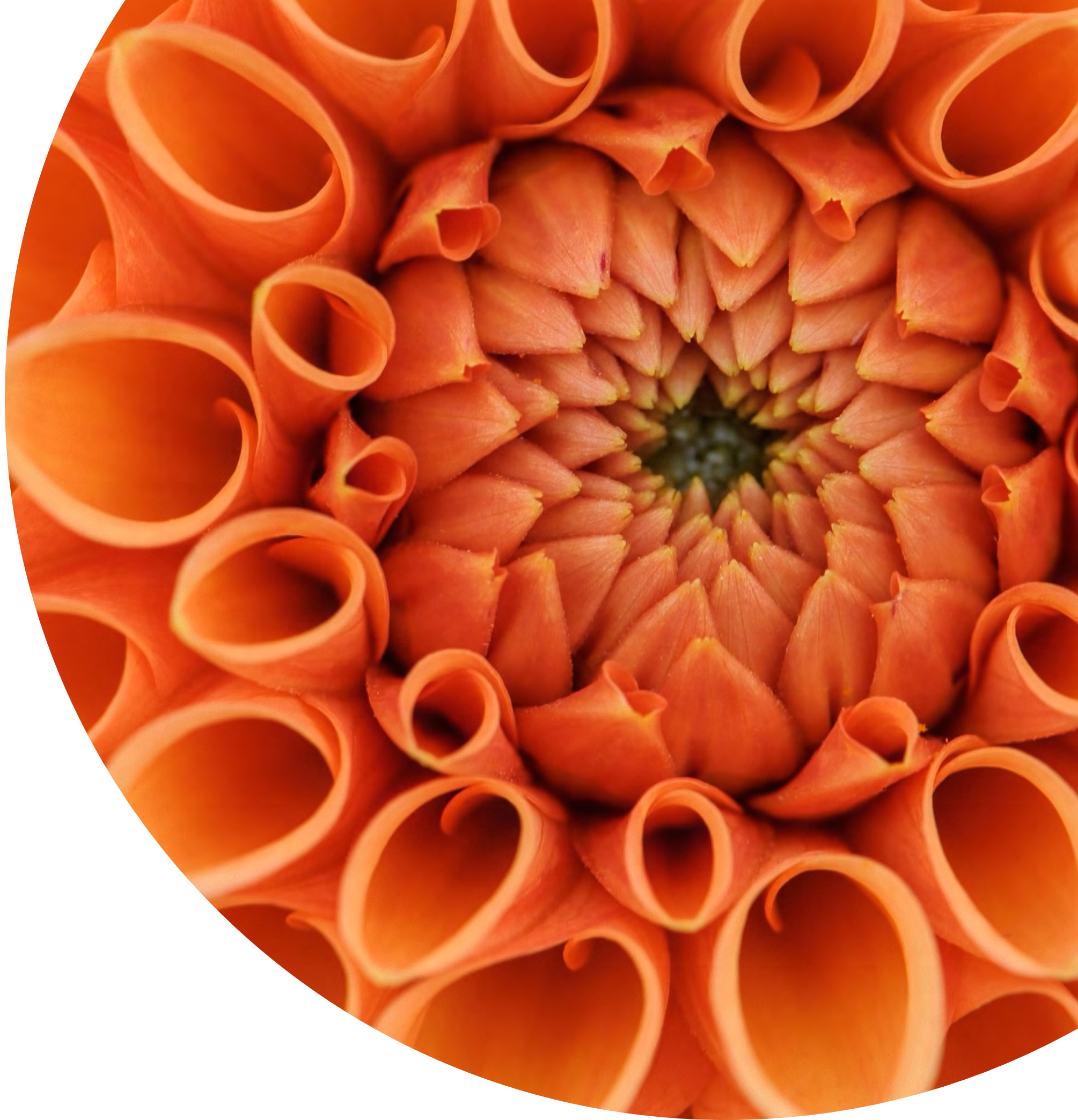
Up to this point you've been learning about index basics. Now, here is a brief overview of how understanding those basics gets put into action within an investment portfolio.

The growing devotion to ETFs is in large part due to their ability to cater for a wide variety of investment objectives and risk profiles in a cost-effective manner. This flexibility is a key reason why financial advisors and portfolio managers employ ETFs in the construction of portfolios sometimes alongside active strategies.



Source: Lipper, Date range: 1/1/2003 - 12/31/2021.

The right ETF starts with the right index



Typically, advisors allocate to ETFs in three ways

There are many reasons why wealth advisors use ETFs in portfolio construction. Those reasons dictate the balance of active and passive strategies in that investment approach.

The top three considerations are:

PORTFOLIO ALLOCATION



1

PRIMARY VEHICLE FOR MARKET EXPOSURE

A portfolio allocated with a majority of passive investments typically relies on a mix of ETFs and other passive investments to keep costs and taxes low.

2

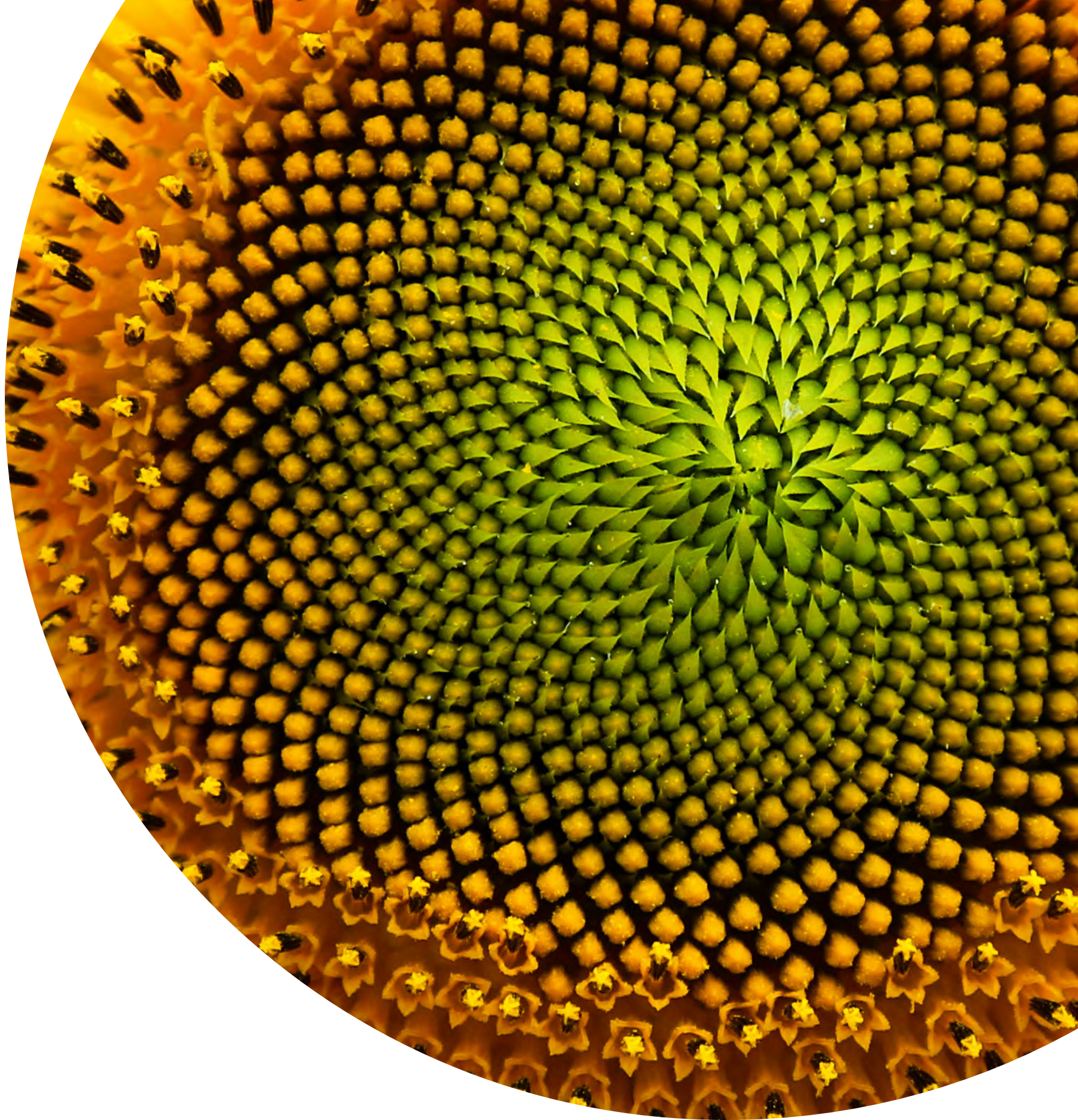
UP TO HALF OF A PORTFOLIO'S BETA

A blend of passive and active investments in a portfolio takes advantage of ETFs' efficient factor exposure and lower costs balanced with expectations for a more active role in risk management and performance beta.

3

MINORITY POSITION FOR TACTICAL EXPOSURE

A portfolio consisting mostly of active with a small percentage of passive investments is likely to concentrate on a specific tilt or factor while utilizing ETFs for cost-efficient exposure.



We build the indices that

Help wealth advisors focus on client goals

More than \$4.39T of investment product assets passively track FTSE Russell indices. Wealth managers and institutional investors around the world select these investment products to build portfolios that meet their clients' specific investment objectives. Analytics tools designed for financial advisors support proportional allocation to asset classes and potentially improve risk-adjusted returns, along with simple portfolio-level performance reporting and customizable capabilities like ESG ratings.

The process

ETFs aim to replicate an underlying index or benchmark. Index providers license an index to an ETF issuer or asset manager.

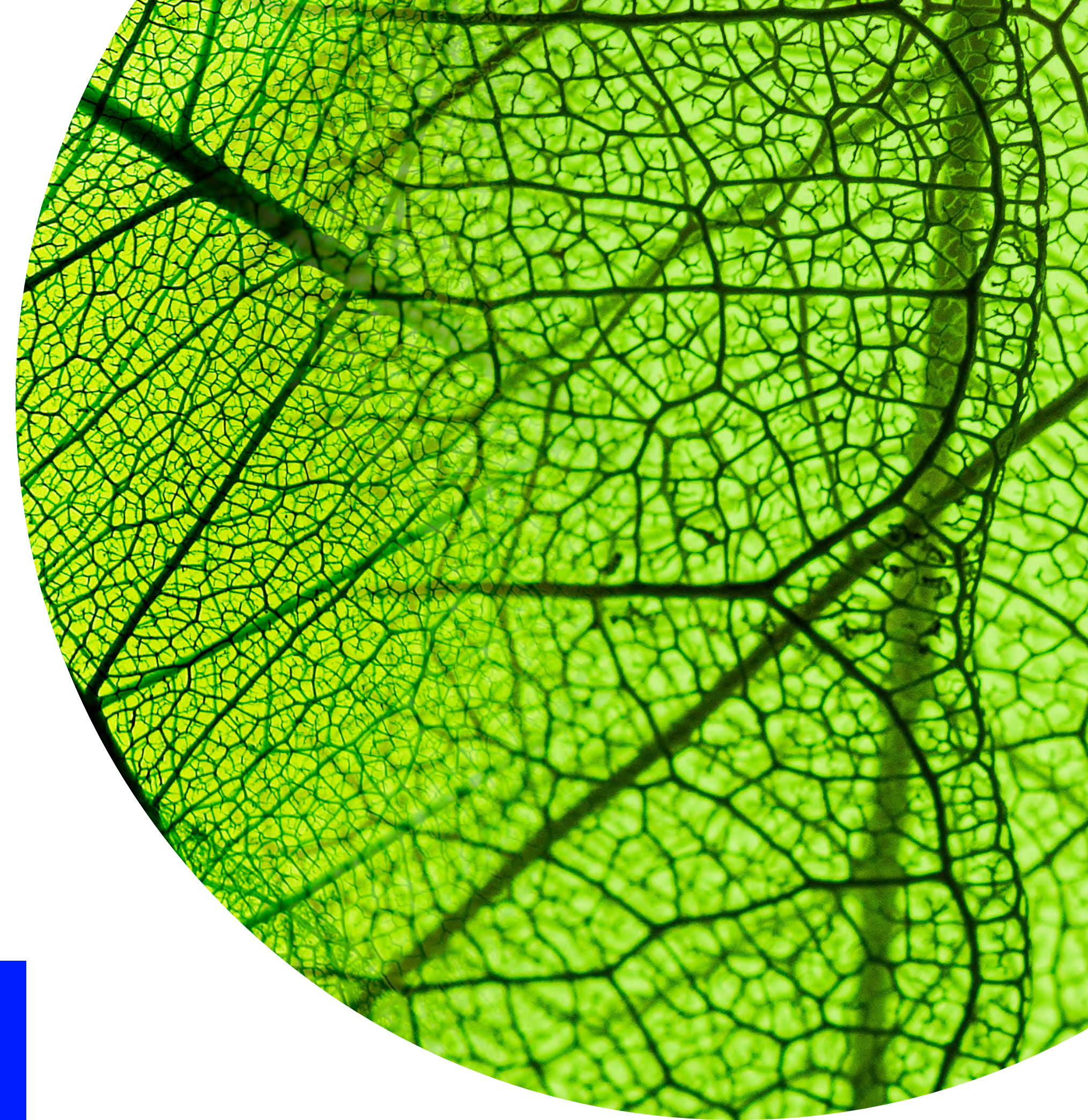


The ETF issuer or asset management company will replicate the index in an ETF usually by buying the index's constituents.



This results in an ETF being "benchmarked" to that index.

*Data as of June 30, 2022, Lipper for retail mutual funds, insurance products, and ETFs, and additional passive assets directly collected by FTSE Russell. AUM data includes blended benchmarks and excludes futures and options. AUM data will not include active and passive assets not reported to a 3rd party source or FTSE Russell. Passive assets directly collected by FTSE Russell have been removed from third party sources to prevent double counting. No assurances are given by FTSE Russell as to the accuracy of the data.



**Global
provider**

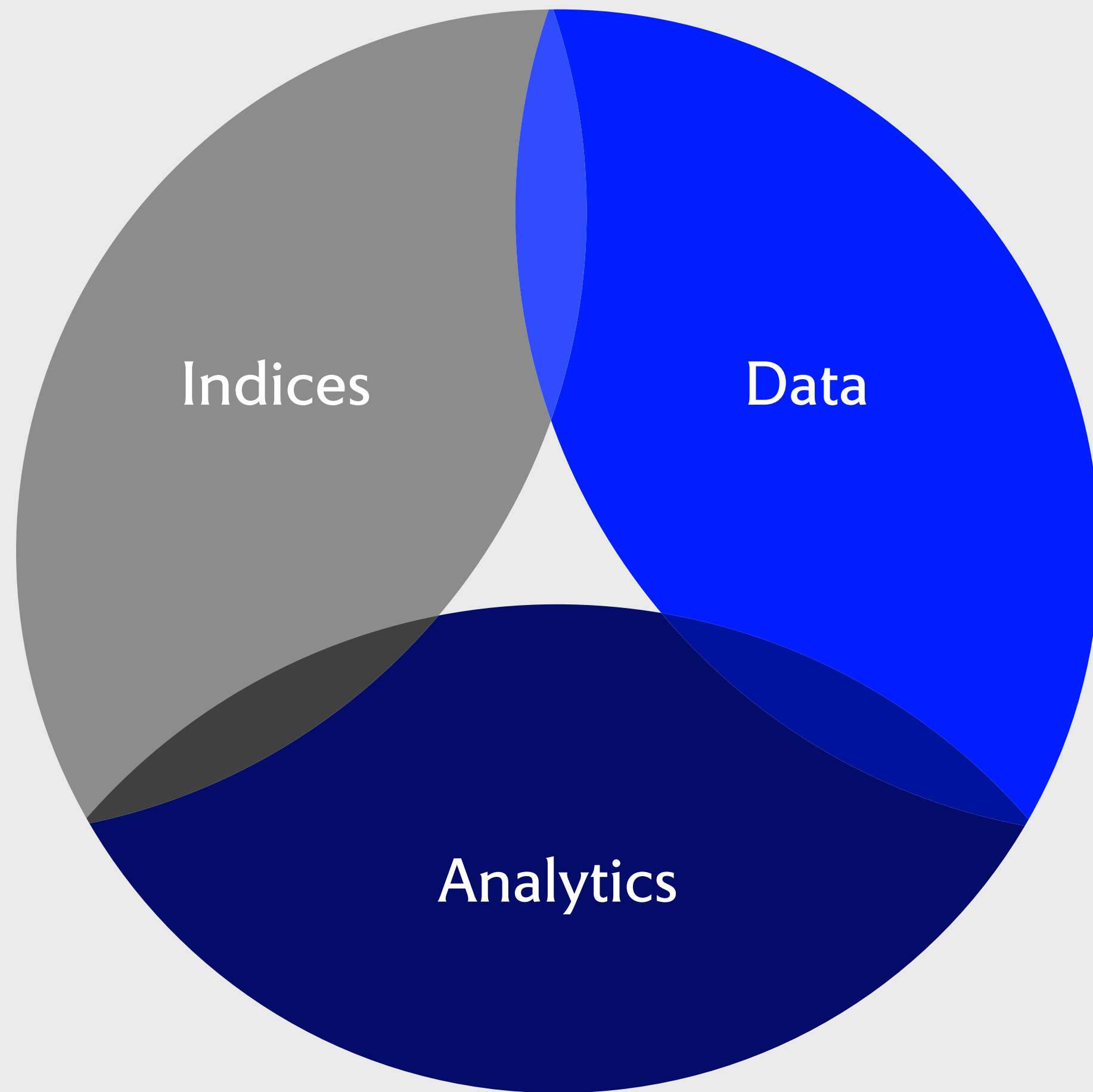
to the world's top asset
owners, asset managers,
and investment banks

**30+
years**

multi-asset
experience

**\$20.1
trillion***

benchmarked to
our indices



*Data as of December 31, 2021, as reported on April 1, 2022, by eVestment for active institutional funds, Morningstar for active retail mutual funds, insurance products, and ETFs, and passive assets directly collected by FTSE Russell. AUM includes blended benchmarks and excludes futures and options. AUM data does not include active and passive assets not reported to a 3rd party source or FTSE Russell. For funds where the AUM was not reported as of December 31, 2021, the previous period AUM was used as an estimate. No assurances are given by FTSE Russell as to the accuracy of the data.

The right ETF starts with the right index

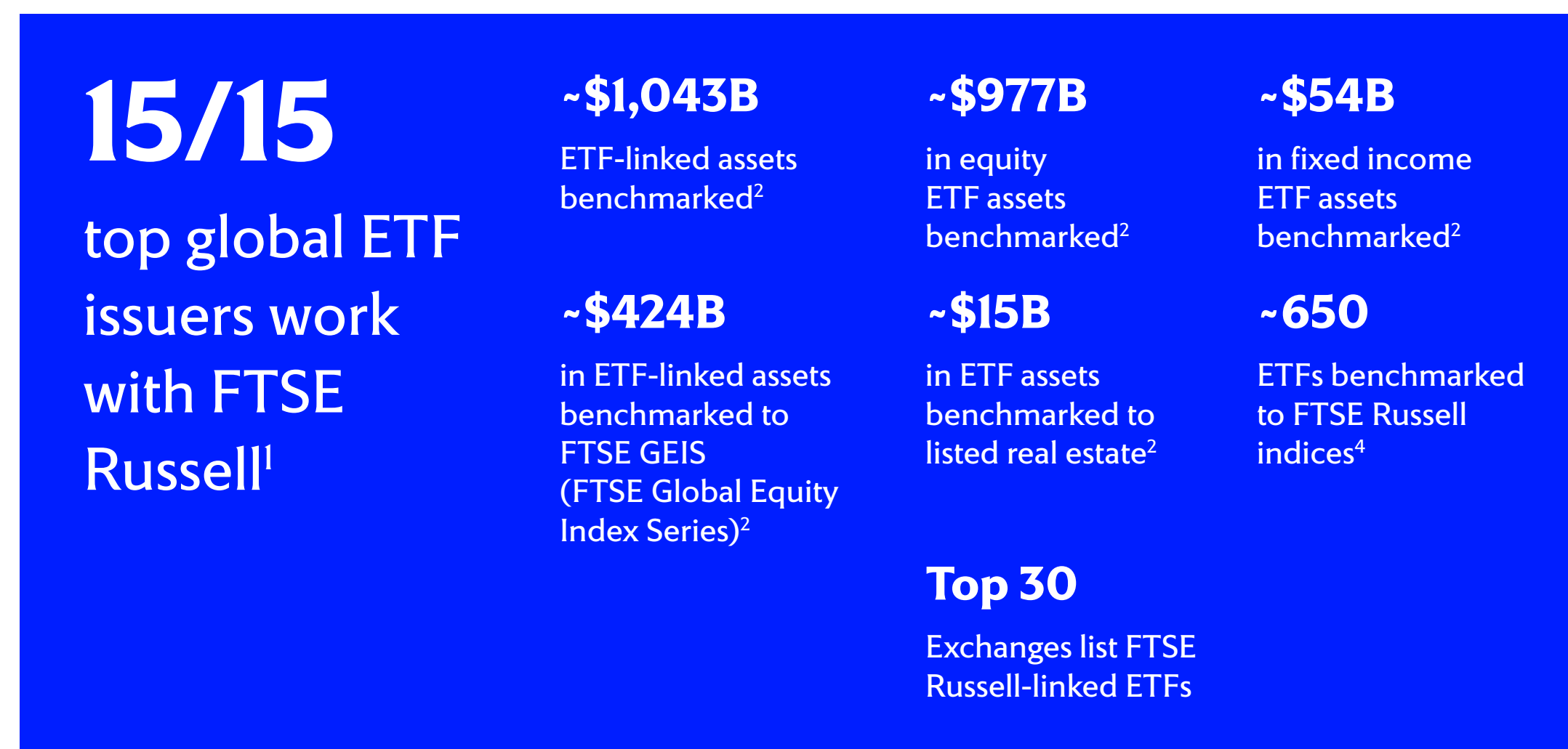
-
- Basis of investable products
 - Performance measurement
 - Investment analytics
 - Risk management
 - Asset allocation
 - Research

-
- Insights for better decision making
 - Examine global market conditions
 - Uncover risks and opportunities
 - Identify trend inflection points
 - Power investment strategies
 - Risk management

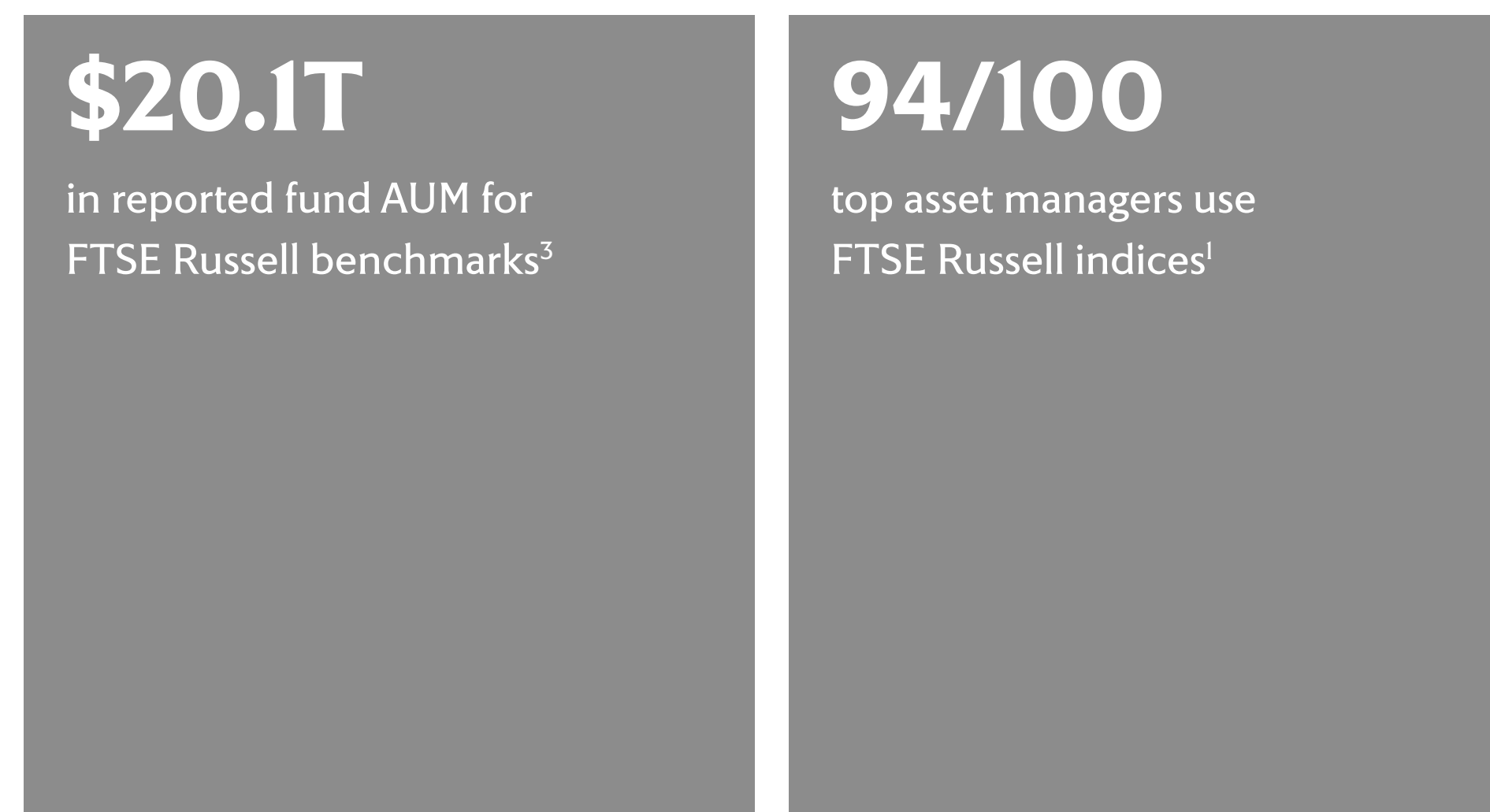
-
- Uncover risks and opportunities
 - Inform corporate strategies
 - Support trading, tracking and reporting
 - Insights for better decision making
 - Research

We're a different kind of index provider

Global ETF-linked assets



Global benchmarked assets



All data in the table above are estimated by FTSE Russell.

1 Based on FTSE Russell clients as of March 2022 and Pension & Investments list of top 100 worldwide asset managers.

2 Based on FTSE Russell clients as of April 2022 and Dealogic list of top 10 investment banks.

3 Data as of December 31, 2021, as reported on April 1, 2022, by eVestment for active institutional funds, Morningstar for active retail mutual funds, insurance products, and ETFs, and passive assets directly collected by FTSE Russell. AUM includes blended benchmarks and excludes futures and options. AUM data does not include active and passive assets not reported to a 3rd party source or FTSE Russell. For funds where the AUM was not reported as of December 31, 2021, the previous period AUM was used as an estimate. No assurances are given by FTSE Russell as to the accuracy of the data.

4 Morningstar, April 2022.

FTSE russell index series

We calculate indices across a vast variety of asset classes and markets. Here are some examples:

RUSSELL US INDICES

Since 1984, Russell US Indices are the leading US equity benchmark for institutional investors.

FTSE GLOBAL FACTOR

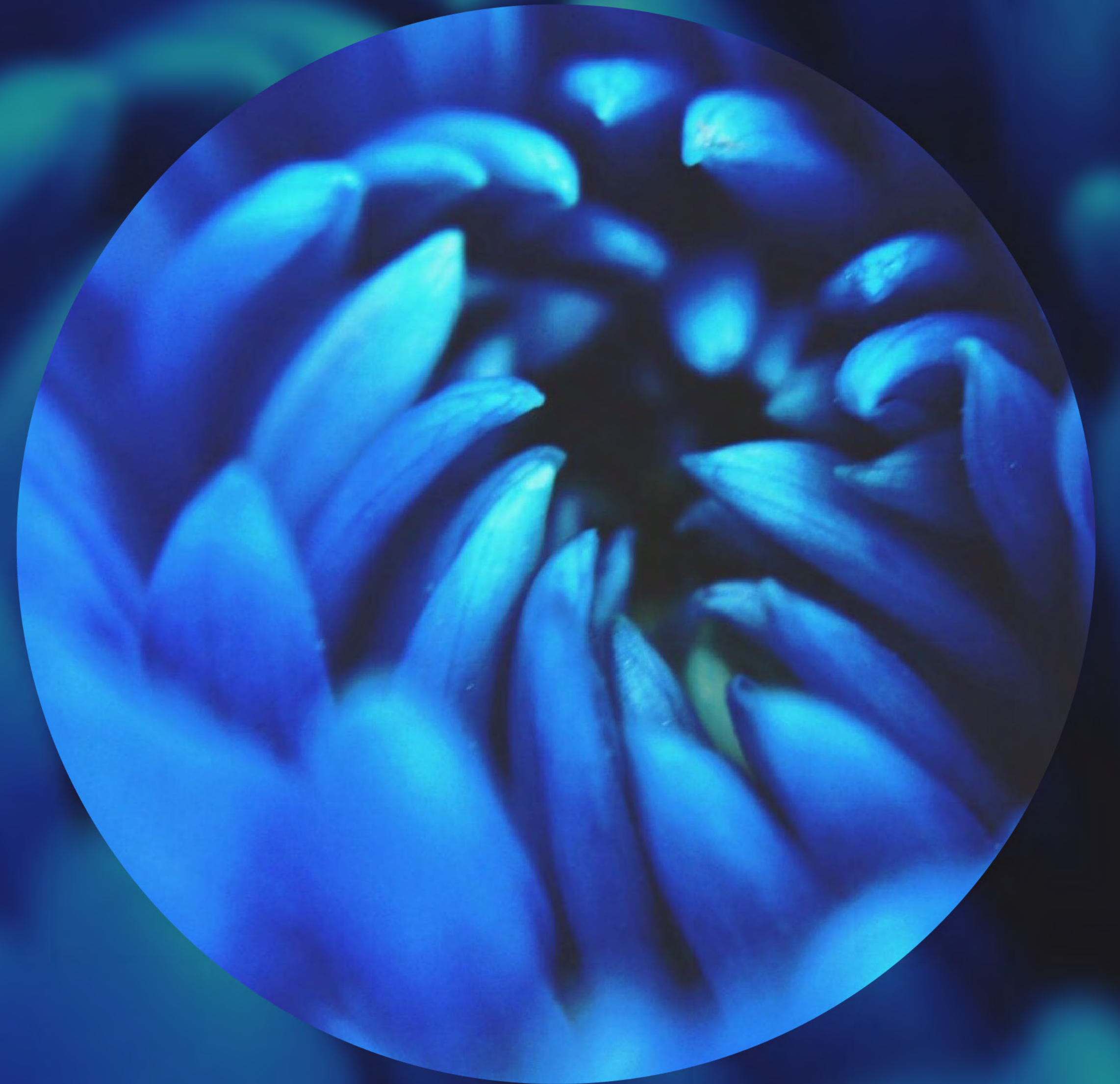
Single and multi-factor indices. FTSE Russell is renowned for its proprietary tilt-tilt methodology.

FTSE FIXED INCOME

Having joined the FTSE Russell index family as part of the Citi acquisition in August 2017, this range offers broad coverage in terms of currency, region, asset class, and credit quality.

FTSE GLOBAL RIC CAPPED

Provides the market cap-weighted index base for individual countries and regions by meeting concentration and diversification requirements.



Our commitment

To help our clients capture opportunity, manage risk, and find a competitive advantage

Quality

We provide global multi-asset solutions with a focus on quality, timeliness, and precision

Reliability

We deliver resilient solutions underpinned by a robust governance framework that comprises indices, analytics, technology, and operations

Pioneering

We want to help our clients become future-ready, and we continually innovate to grow our industry and shape its future

Responsive

We create agile, client-centric solutions that evolve to meet changing market needs

Transparent

We take pride in fostering transparency throughout the investment process

Partnership

We partner with industry thought leaders and clients to embed innovation and trust

Service

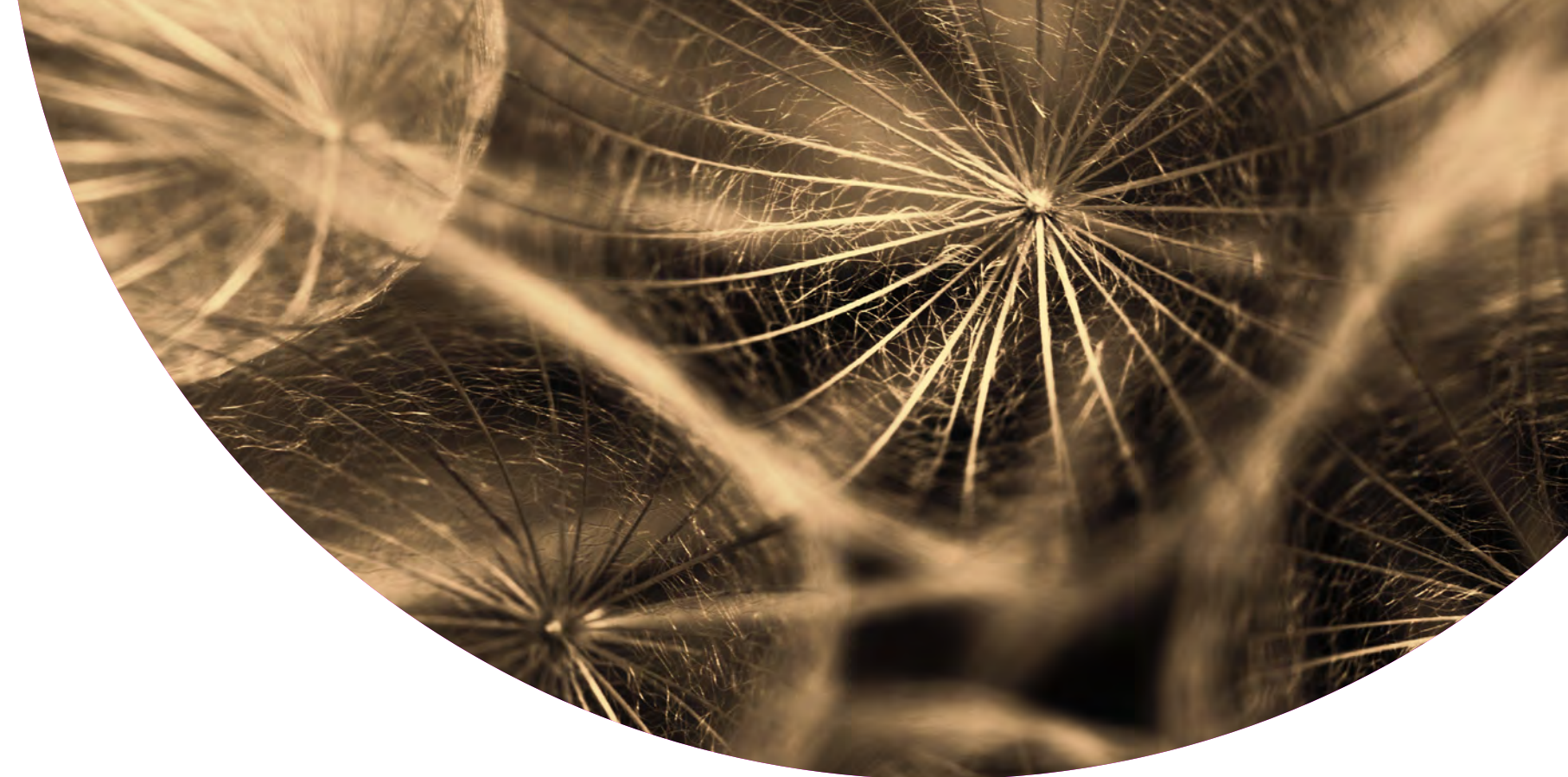
We have a global team of experts dedicated to meeting our clients' needs

Accessible

We partner with distributors around the world to ensure easy access to our data

Global and local

We combine global perspective with local knowledge. We are sensitive to market needs



Download whitepapers to learn more

Flagship indices underlying ETFs and research reports

SOLUTION OVERVIEW

Russell 2000 Index
Product Highlights

A complete view of the small cap segment of the US equity market.

The Russell 2000 Index is constructed to provide a comprehensive, unbiased barometer of the small cap segment of the US equity market. A subset of the Russell 3000 Index, it includes approximately 2,000 of the smallest securities based on a combination of their market cap and current index membership.

Russell 2000® Index
Largest company market cap: \$5.2 B
Smallest company market cap: \$273M
Portion of Russell 3000® Index: 7%

Index launched: January 1, 1984
Performance available from: December 31, 1978
Bloomberg Price Return Ticker: RUS200TR
Bloomberg Total Return Ticker: RUS200TR
Thomson Reuters RIC: RUS2

Your index matters.
Institutional investors rely on Russell Indexes – and you can use them to capture your clients' investment requirements with precision.

Russell Indexes offer rigor, precision and predictable coverage – driven by the market:

- Objectivity** to provide a reliable benchmark
- Comprehensiveness** so you don't miss out on high-growth stocks that may be excluded from other indexes
- Modularity and Accuracy** with no gaps or overlaps, so you can capture your strategy with precision
- Rigorous Maintenance** so your index delivers the predictability you need

Source: FTSE Russell. Data as of May 2, 2021. Russell Index constituents represent the preliminary reconstruction components as of June 30, May 2, 2021, which will be effective after market close on June 25, 2021. May not equal 100% due to rounding. The largest and smallest companies listed reflect weighting, which involves the representation of a 1% band around the absolute breakpoint at the top of the Russell 2500 Index (tick #150).

FTSE RUSSELL
An LSEG Business

↓ Russell 2000 – Product Highlights

The Russell 2000 Index is constructed to provide a comprehensive, unbiased barometer of the small cap segment of the US equity market.

A subset of the Russell 3000 Index, it includes approximately 2,000 of the smallest securities based on a combination of their market cap and current index membership.

SOLUTION OVERVIEW

Russell US Indexes Characteristics
FTSE Russell Data Solutions

Russell US Indexes characteristics calculated by FTSE Russell Data Solutions provide additional insights into US market segments, at both the aggregate index level and security level. Russell 3000® and Russell 3000E security level files are available*.

Index characteristics calculated with and without outliers

The index level file includes characteristics using both the standard FTSE Russell calculation including outliers, and the method applied to the Russell US Indexes historically to exclude outliers in the aggregate calculations based on the interquartile range.

Additional insights into market behavior

The FTSE Russell-calculated index and security level characteristics can be used by investment or research managers to study changes in the market. Product and marketing professionals may use the same characteristics to highlight differentiating features of these investment products.

Practical Includes standard market cap segments. Additionally, style indexes (growth/value, defensive/dynamic and combined styles) are included for key market segments as well as equal weight indexes.

Timely Index and security level characteristics files are delivered monthly, with a target delivery of five business days after month-end.

Available indexes

Index Name	Core	Growth/Value	Defensive/Dynamic	Equal weight
Russell 1000®	•	•	•	•
Russell 2000®	•	•	•	•
Russell Midcap®	•	•	•	•
Russell Top 200®	•	•	•	•
Russell 2500	•	•	•	•
Russell 3000®	•	•	•	•
Russell 3000E	•	•	•	•
Russell Microcap®	•	•	•	•
Russell Small Cap Completeness®	•	•	•	•
Russell Top 50®	•	•	•	•
Russell Top 500	•	•	•	•

* Please contact your FTSE Russell representative for special subscription information for the Russell Microcap and the Russell 3000E indexes.

FTSE RUSSELL
An LSEG Business

↓ Russell US Indices Characteristics

Russell US Indices characteristics calculated by FTSE Russell Data Solutions provide additional insights into US market segments, at both the aggregate index level and security level.

SOLUTION OVERVIEW

Executing an Asset Allocation Strategy? Your Index Makes a Difference.

A well-constructed index can enable you to capture your clients' investment requirements with greater precision and get earlier access to fast-growing stocks.

It is a common misperception that two indexes covering the same market segment must be essentially interchangeable. But the truth is, not all indexes are created equal.

Every index is the product of choices involving market coverage, construction methodology and ongoing maintenance of the member list. As a result, indexes perceived to be comparable can have profound, even surprising, differences. These differences may hamper your ability to capture investment requirements precisely. For example, they may adversely impact your ability to achieve your intended asset allocation. Or cause you to miss growth opportunities in fast-moving stocks.

In short: Your index matters.

Institutional investors rely on Russell Indexes. You and your clients can also reap the benefits of using these powerful, institutional-grade indexes.

Among institutional investors, Russell Indexes are the leading US Equity benchmarks.

\$10.6 Trillion Russell US Indexes, total assets, under management	69% Total Active US Equity market share (institutional)	81% Total US Equity Small Cap market share (active, institutional and retail)	90% Total US Equity Style Indexes, market share (growth/value, active, passive, institutional and retail)
--	---	---	---

RUSSELL INDEXES: FAST FACTS

- Launched 1984
- Mission: To provide accurate representation of the investable US equity market
- Russell 2000 Index (1984): first US small cap index
- Russell Style Indexes (1987): first growth and value equity market segment indexes
- Fully float-adjusted methodology: Index counts only shares available to investors on the open market

FTSE RUSSELL
An LSEG Business

↓ Executing an Asset Allocation Strategy? Your Index Makes a Difference

A well-constructed index can enable you to capture your clients' investment requirements with greater precision and get earlier access to fast-growing stocks.

Frequently asked questions

What is an index?

- Hypothetical portfolio of securities designed to represent an asset class, market or market segment.
- As an index provider, FTSE Russell produces hundreds of indices that investors can replicate.
- Economists use them to understand and analyze economic trends
- Investors use indices to conduct risk analysis, develop investment policies and create asset allocation strategies.
- Most investors use indices to evaluate the performance of their investment portfolios.
- Indices are also used as a basis for investable products, such as index mutual funds or exchange-traded funds (ETFs) that track or replicate an index as closely as possible.

What are the main benefits of index inclusion?

- Passive funds have grown in popularity during the last two decades.
- According to the consultancy firm ETFGI, global assets in exchange-traded funds (ETFs) (most of which track indices) have risen from \$0.4 trillion in 2005 to \$10.3 trillion in 2022. These funds are a natural source of demand for the companies included in indices.
- Indices underlie popular hedging instruments such as equity futures, options, and swaps, creating demand from derivatives users.
- Admission to an index tracked by an ETF or index fund, or widely used as a performance benchmark means a potential boost in investor interest and company recognition.

Do companies have any say in their consideration for index admission?

- Index admission is determined by the index ground rules and admission policy cannot be influenced by any individual company.
- FTSE Russell regularly consults the market on changes to the methodology of its indices to ensure that they continue to meet investors' requirements and to define and lead global standards.
- FTSE Russell's indices are also overseen by 24 advisory committees, whose members are leading representatives from the asset manager, asset owner, custodian, broker, and consultant communities.
- Engage regularly with other stakeholders, such as central banks and regulators.

Who takes the decision to admit or remove companies?

- There is no person or entity taking this decision—the admission of a company to (or removal from) a FTSE Russell index is determined by the ground rules.
- The index ground rules and other methodology documents and policies, which underpin FTSE Russell indices, are written with the intent of removing the need for judgement or discretion, in so far as is feasible.

What are the index ground rules?

- An index's ground rules are the key reference document for anyone wishing to understand the methodology of the index.
- They cover the index's objective and its intended use, the management responsibilities of the entities responsible for calculating, producing and operating the index, relevant index policies (such as the calculation method or the management of corporate events and actions), the security inclusion criteria, screens for index inclusion and the index review frequency.

A glossary of the terms used in FTSE Russell's index ground rules is available [here](#).

Who manages the index admission process at IPO time—broker, company or exchange?

- None of those.
- Index admission policy is set by the index’s ground rules.
- The admission of a newly listed company will be considered automatically at the next index review date (or, in the case of a large IPO, under the relevant index’s fast entry rules).

How often are indices reviewed?

- This depends on the index. The index review frequency is stated in the ground rules.
- The FTSE UK Index Series, for example, is reviewed on a quarterly basis in March, June, September, and December. The FTSE Global Equity Index Series (GEIS), FTSE Russell’s flagship global equity benchmark⁴, is reviewed semiannually in March and September.

How are indices calculated?

- The calculation methodology for FTSE Russell indices is set out in the relevant index’s ground rules and, in certain cases, in a separate document
- These methodology documents set out in detail how an index is assembled and calculated. They make it easier for users to replicate the indices in order to support their investment and trading activities, and they assist users in understanding the component factors which influence the performance of the indices.
- The documents also explain how index variants are calculated. These variants typically include capital and total return indices, net total return indices, based on specified withholding tax rates, indices calculated in currencies other than the base currency, currency-hedged indices, capped indices, and sector indices.
- Some indices within an index series may be calculated in real time, while others are calculated at end of day only.

Which regulatory body supervises the index industry (and FTSE Russell indices)?

Index firms are supervised and regulated both directly and indirectly (for example, by means of funds regulation). Some of the most relevant global, regional and national regulations and guidelines are:

- The EU (and UK) Benchmark Regulation
- The International Organization of Securities Commissions (IOSCO) Benchmark Principles
- The ESMA Guidelines on ETFs and other UCITS issues
- The US ETF listing standards
- The EU Markets in Financial Instruments Regulation (MiFIR)

How does an index provider manage potential conflicts of interest?

- FTSE Russell has processes in place to identify, assess and manage potential conflicts of interest.
- Conflicts of interest are recorded in a Conflicts of Interest Register; reviewed periodically in line with our governance framework
- Conflicts of interest may arise in areas including organizational ownership, index design, clients, partners or suppliers, individual employees and directors.
- Processes are subject to review by the FTSE Russell Index Management Board on an annual basis, or more frequently if the possibility of a conflict arises.

Disclaimer

© 2023 London Stock Exchange Group plc and its applicable group undertakings (the “LSE Group”). The LSE Group includes (1) FTSE International Limited (“FTSE”), (2) Frank Russell Company (“Russell”), (3) FTSE Global Debt Capital Markets Inc. and FTSE Global Debt Capital Markets Limited (together, “FTSE Canada”), (4) FTSE Fixed Income Europe Limited (“FTSE FI Europe”), (5) FTSE Fixed Income LLC (“FTSE FI”), (6) The Yield Book Inc (“YB”) and (7) Beyond Ratings S.A.S. (“BR”). All rights reserved.

FTSE Russell® is a trading name of FTSE, Russell, FTSE Canada, FTSE FI, FTSE FI Europe, YB and BR. “FTSE®”, “Russell®”, “FTSE Russell®”, “FTSE4Good®”, “ICB®”, “The Yield Book®”, “Beyond Ratings®” and all other trademarks and service marks used herein (whether registered or unregistered) are trademarks and/or service marks owned or licensed by the applicable member of the LSE Group or their respective licensors and are owned, or used under licence, by FTSE, Russell, FTSE Canada, FTSE FI, FTSE FI Europe, YB or BR. FTSE International Limited is authorised and regulated by the Financial Conduct Authority as a benchmark administrator.

All information is provided for information purposes only. All information and data contained in this publication is obtained by the LSE Group, from sources believed by it to be accurate and reliable. Because of the possibility of human and mechanical error as well as other factors, however, such information and data is provided “as is” without warranty of any kind. No member of the LSE Group nor their respective directors, officers, employees, partners or licensors make any claim, prediction, warranty or representation whatsoever, expressly or impliedly, either as to the accuracy, timeliness, completeness, merchantability of any information or of results to be obtained from the use of FTSE Russell products, including but not limited to indexes, data and analytics, or the fitness or suitability of the FTSE Russell products for any particular purpose to which they might be put. Any representation of historical data accessible through FTSE Russell products is provided for information purposes only and is not a reliable indicator of future performance.

No responsibility or liability can be accepted by any member of the LSE Group nor their respective directors, officers, employees, partners or licensors for (a) any loss or damage in whole or in part caused by, resulting from, or relating to any error (negligent or otherwise) or other circumstance involved in procuring, collecting, compiling, interpreting, analysing, editing, transcribing, transmitting, communicating or delivering any such information or data or from use of this document or links to this document or (b) any direct, indirect, special, consequential or incidental damages whatsoever, even if any member of the LSE Group is advised in advance of the possibility of such damages, resulting from the use of, or inability to use, such information.

No member of the LSE Group nor their respective directors, officers, employees, partners or licensors provide investment advice and nothing in this document should be taken as constituting financial or investment advice. No member of the LSE Group nor their respective directors, officers, employees, partners or licensors make any representation regarding the advisability of investing in any asset or whether such investment creates any legal or compliance risks for the investor. A decision to invest in any such asset should not be made in reliance on any information herein. Indexes cannot be invested in directly. Inclusion of an asset in an index is not a recommendation to buy, sell or hold that asset nor confirmation that any particular investor may lawfully buy, sell or hold the asset or an index containing the asset. The general information contained in this publication should not be acted upon without obtaining specific legal, tax, and investment advice from a licensed professional.

The information contained in this report should not be considered “research” as defined in recital 28 of the Commission Delegated Directive (EU) 2017/593 of 7 April 2016 supplementing Directive 2014/65/EU of the European Parliament and of the Council (“MiFID II”) and is provided for no fee.

Past performance is no guarantee of future results. Charts and graphs are provided for illustrative purposes only. Index returns shown may not represent the results of the actual trading of investable assets. Certain returns shown may reflect back-tested performance. All performance presented prior to the index inception date is back-tested performance. Back-tested performance is not actual performance, but is hypothetical. The back-test calculations are based on the same methodology that was in effect when the index was officially launched. However, back-tested data may reflect the application of the index methodology with the benefit of hindsight, and the historic calculations of an index may change from month to month based on revisions to the underlying economic data used in the calculation of the index.

This document may contain forward-looking assessments. These are based upon a number of assumptions concerning future conditions that ultimately may prove to be inaccurate. Such forward-looking assessments are subject to risks and uncertainties and may be affected by various factors that may cause actual results to differ materially. No member of the LSE Group nor their licensors assume any duty to and do not undertake to update forward-looking assessments.

No part of this information may be reproduced, stored in a retrieval system or transmitted in any form or by any means, electronic, mechanical, photocopying, recording or otherwise, without prior written permission of the applicable member of the LSE Group. Use and distribution of the LSE Group data requires a licence from FTSE, Russell, FTSE Canada, FTSE FI, FTSE FI Europe, YB, BR and/or their respective licensors.

Visit lseg.com/ftse-russell

About FTSE Russell (LSEG)

FTSE Russell is a leading global provider of index and benchmark solutions, spanning diverse asset classes and investment objectives. As a trusted investment partner we help investors make better-informed investment decisions, manage risk, and seize opportunities.

Market participants look to us for our expertise in developing and managing global index solutions across asset classes. Asset owners, asset managers, ETF providers and investment banks choose FTSE Russell solutions to benchmark their investment performance and create investment funds, ETFs, structured products, and index-based derivatives. Our clients use our solutions for asset allocation, investment strategy analysis and risk management, and value us for our robust governance process and operational integrity.

For over 35 years we have been at the forefront of driving change for the investor, always innovating to shape the next generation of benchmarks and investment solutions that open up new opportunities for the global investment community.

To learn more, email info@ftserussell.com; or call your regional Client Service Team office:

EMEA

+44 (0) 20 7866 1810

North America

+1 877 503 6437

Asia-Pacific

HONG KONG +852 2164 3333

TOKYO +81 (3) 6441 1430

SYDNEY +61 (0) 2 7228 5659