

FTSE Russell- linked derivatives

List of global derivatives contracts
linked to FTSE Russell indices
– Q3 2023



**FTSE
RUSSELL**

An LSEG Business



Abu Dhabi Securities Exchange (ADX)

Product name	Type	More
FADX 15 Index (FADX 15)	Futures	

Athens Derivatives Exchange, Greece

Product name	Type	More
FTSE/Athex Large Cap	Futures	
FTSE/Athex Large Cap	Options	

Bursa Malaysia

Product name	Type	More
KLSE Composite	Futures	
KLSE Composite	Options	
FTSE Bursa Malaysia Mid 70	Futures	

Chicago Board Options Exchange (Cboe)

Product name	Type	More
FTSE 100 Mini-Index	Options	
Russell 2000 Index (RUT)	Options	
Russell 1000 Index (RUI)	Options	
Russell 1000 Growth Index (RLG)	Options	
Russell 1000 Value Index (RLV)	Options	

Chicago Mercantile Exchange (CME Group)

Product name	Type	More
FTSE 100 Index GBP (FT1)	Futures	
FTSE 100 Index USD (FTU)	Futures	
FTSE 100 Total Return Declared Dividend Index (FTSE 100 Adjusted Interest Rate (AIR) Total Return)	Futures	FTSE 100 Total Return Declared Dividend Index FTSE Russell
FTSE China 50 Index USD (FT5)	Futures	
FTSE Emerging Index (EI)	Futures	
E-mini Russell 2000 Index	Futures	
E-mini Russell 2000 Index	Options	
Micro E-mini Russell 2000 Index (M2K)	Futures	
Russell 1000 Growth Index (RSG)	Futures	
Russell 1000 Index (RS1)	Futures	
Russell 1000 Value Index (RSV)	Futures	
E-mini Russell 2000 Tuesday and Thursday	Options	

Eurex

Product name	Type	More
FTSE 100 Index	Futures	FTSE 100 Index FTSE Russell
FTSE 100 Index	Options	FTSE 100 Index FTSE Russell
FTSE 100 Declared Dividend Index	Futures	FTSE 100 Declared Dividend Index FTSE Russell
FTSE 100 Cumulative Dividend Points Index (FTSE 100 Total Return Futures)	Futures	FTSE 100 Cumulative Dividend Points Index FTSE Russell
FTSE Bitcoin Index (EUR)	Futures	
FTSE Bitcoin Index (USD)	Futures	

Euronext Derivatives Market, Amsterdam

Product name	Type	More
FTSE EPRA Nareit Developed Europe Index	Futures	
FTSE EPRA Nareit Eurozone Index	Futures	
FTSEurofirst 100	Futures	
FTSEurofirst 80	Futures	
FTSE 100 Index	Futures	

ICE Futures Europe (1/2)

Product name	Type	More
FTSE 100 Index	Futures	
FTSE 100 Equally Weighted TR Index	Futures	
FTSE 100 (ESX)	Options	
FTSE 100 Dividend Index	Futures	
FTSE 100 Declared Dividend	Futures	
FTSE 100 Euro FLEX	Options	
FTSE 250	Futures	
FTSE 250	Options	
FTSEurofirst 100	Futures	
FTSEurofirst 100	Options	
FTSEurofirst 80	Futures	
FTSEurofirst 80	Options	

ICE Futures Europe (2/2)

Product name	Type	More
FTSE Developed Europe SMID Cap Tradable Plus NTR	Futures	
FTSE UK Mid Cap Tradable Plus NTR	Futures	
FTSE All-Share ESG Risk Adjusted Index	Futures	
FTSE 100 ESG Risk Adjusted Index	Futures	

Italian Derivatives Market of Borsa Italiana

Product name	Type	More
FTSE Italia PIR Mid Cap Index	Futures	
FTSE MIB Index	Futures	
FTSE MIB Dividend	Futures	
Mini FTSE MIB Index	Futures	
FTSE MIB Index	Options	

JSE Securities Exchange, South Africa (1/2)

Product name	Type	More
FTSE/JSE 25 Index (INDI)	Futures	
FTSE/JSE Top 40 Index (ALSI)	Futures	
FTSE/JSE Top 40 Index - Mini (ALMI)	Options	
FTSE/JSE Capped Top 40 Index (CTOP)	Futures	
FTSE/JSE Equally Weighted TOP 40 (ETOP)	Futures	
FTSE/JSE Mid Cap Index (MINI)	Futures	
FTSE/JSE African Banks Index (J835)	Futures	
FTSE/JSE African Banks Index (J835)	Options	
FTSE/JSE SA Listed Property Index (SAPI)	Futures	
FTSE/JSE Capped Property Index Total Return Index (JCAR)	Futures	
FTSE/JSE Shareholder Weighted Top 40 Index (DTOP)	Futures	

JSE Securities Exchange, South Africa (2/2)

Product name	Type	More
FTSE/JSE Shareholder Weighted Top 40 Index (DTOP)	Options	
FTSE/JSE Capped Shareholder Weighted 40 Index (DCAP)	Futures	
FTSE/JSE Capped Shareholder Weighted 40 Index (DCAP)	Options	
FTSE/JSE General Retailers Index (GERE)	Futures	
FTSE/JSE Financial 15 Index (FIN)	Futures	
FTSE/JSE Financial 15 Index (FINI)	Options	
FTSE/JSE FNDI 30 Index (FNDI)	Futures	
FTSE/JSE FNDI 30 Index (FNDI)	Options	
FTSE/JSE RESI 20 Index (RESI)	Futures	
FTSE/JSE RESI 20 Index (RESI)	Options	

Japan Exchange Group (JPX)

Product name	Type	More
FTSE JPX Net Zero Japan 500 Index	Futures	

Nasdaq Dubai

Product name	Type	More
FTSE Saudi Arabia Index	Futures	

Singapore Exchange (SGX) (1/3)

Product name	Type	More
FTSE Asia ex Japan ESG Index	Futures	FTSE Asia ex Japan ESG Index FTSE Russell
FTSE Asia ex Japan Index	Futures	FTSE Asia Pacific ex Japan, Australia and New Zealand Index FTSE Russell
FTSE Asia ex Japan Index (USD/NTR)	Futures	FTSE Asia Pacific ex Japan, Australia and New Zealand Index (USD) FTSE Russell
FTSE Australia Index (USD/NTR)	Futures	FTSE Australia Index (USD) FTSE Russell
FTSE Blossom Japan Index	Futures	FTSE Blossom Japan Index FTSE Russell
FTSE China 50 Index	Futures	FTSE China 50 Index FTSE Russell
FTSE China 50 Index	Options	FTSE China 50 Index FTSE Russell
FTSE China A50 Index	Futures	FTSE China 50 Index FTSE Russell
FTSE EM Asia ESG Index	Futures	FTSE Emerging Asia ESG Index FTSE Russell
FTSE EM Asia Index	Futures	FTSE Emerging Asia Pacific Index FTSE Russell
FTSE EM Asia Index (USD/NTR)	Futures	FTSE Emerging Asia Pacific Index FTSE Russell

Singapore Exchange (SGX) (2/3)

Product name	Type	More
FTSE Emerging ESG Index	Futures	FTSE Emerging ESG Index FTSE Russell
FTSE Emerging Inc. Korea Index (USD/NTR)	Futures	FTSE Emerging inc Korea Net Tax Index FTSE Russell
FTSE Emerging Index	Futures	FTSE Emerging Index FTSE Russell
FTSE Emerging Index (USD/NTR)	Futures	FTSE Emerging Index (USD) FTSE Russell
FTSE EPRA Nareit Asia ex Japan REITs 10% Capped Index	Futures	FTSE EPRA Nareit Asia ex Japan REITs 10% Capped Price Index FTSE Russell
FTSE Frontier Large Mid Cap Vietnam Index	Futures	FTSE Frontier Large Mid Cap Vietnam Index FTSE Russell
FTSE Indonesia Index	Futures	FTSE Indonesia Index (USD) FTSE Russell
FTSE Indonesia Index (USD/NTR)	Futures	FTSE Indonesia Index (USD) FTSE Russell
FTSE Japan Index (USD/NTR)	Futures	FTSE Japan Index (USD) FTSE Russell
FTSE Malaysia Index	Futures	FTSE Malaysia Index FTSE Russell
FTSE Malaysia Index (USD/NTR)	Futures	FTSE Malaysia Index FTSE Russell

Singapore Exchange (SGX) (3/3)

Product name	Type	More
FTSE New Zealand Index (USD/NTR)	Futures	FTSE New Zealand Index (USD) FTSE Russell
FTSE Philippines Index	Futures	FTSE Philippines Index FTSE Russell
FTSE Philippines Index (USD/NTR)	Futures	FTSE Philippines Index (USD) FTSE Russell
FTSE Saudi Arabia Index (USD/NTR)	Futures	FTSE Saudi Arabia Index (USD) FTSE Russell
FTSE Taiwan Index (USD/NTR)	Futures	FTSE Taiwan Index (USD) FTSE Russell
FTSE Taiwan RIC Capped Index	Futures	FTSE Taiwan RIC Capped Price Index FTSE Russell
FTSE Thailand Index	Futures	FTSE Thailand Index FTSE Russell
FTSE Thailand Index (USD/NTR)	Futures	FTSE Thailand Index (USD) FTSE Russell
Straits Times Index	Futures	
FTSE Vietnam 30 Index	Futures	FTSE Vietnam 30 Index FTSE Russell
FTSE Taiwan RIC Capped Index	Options	FTSE Taiwan RIC Capped Price Index FTSE Russell

Tokyo Financial Exchange (TFX)

Product name	Type	More
FTSE 100 Index	Futures	
Russell 2000 Index	Futures	

Taiwan Futures Exchange (TAIFEX)

Product name	Type	More
FTSE 100 Index	Futures	
FTSE4Good TIP Taiwan ESG Index	Futures	

Additional ETP & derivatives resources

Name	Type
List of APAC domiciled ETPs linked to FTSE Russell indices	Product guide
List of EMEA domiciled ETPs linked to FTSE Russell indices	Product guide
List of US and Canada domiciled ETPs linked to FTSE Russell indices	Product guide
Advisor's guide to indexing and ETFs	Educational
Russell 2000 Index Quarterly Chartbook	Market report
FTSE Global Equity Index Series (GEIS)	Infographic
Why Index Reconstitution?	Infographic
The role of indices in today's capital markets	Video

Drive your competitive edge with FTSE Russell indices

FTSE Russell index-based derivatives include futures and options, financial contracts that provide investors with exposure to the performance of an asset class or group of stocks in a single trade. They are often used as risk-hedging tools bought with the expectation that the value of the underlying index will increase or decrease during the time of the contract. Investors choosing these products can gain access to more difficult to reach asset classes, regions and categories.

FTSE Russell does not distribute futures or options products. These products are listed for trading on the exchanges noted in this document; please contact the exchange or your broker for more information.

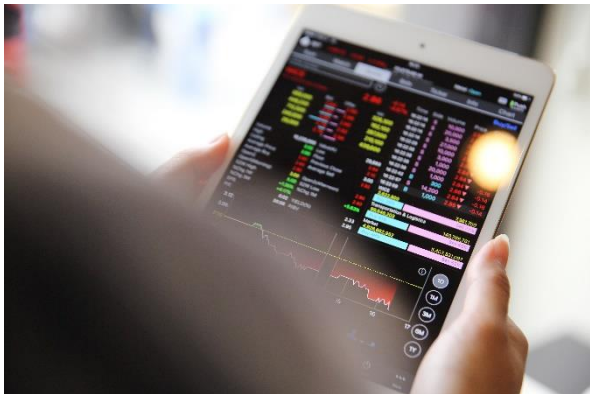
Derivatives products are not sponsored, endorsed, issued, sold or promoted by FTSE Russell or LSEG. Nor do FTSE Russell or LSEG make any representation regarding the advisability of investing in any of the products. Exchanges listed in this document are not affiliated to FTSE Russell or LSEG.

The right derivatives strategy starts with the right index

Deeper knowledge about how indices work can drive better portfolio outcomes.

ftserussell.com/research

ftserussell.com/education-center/advisors-guide-indexing-and-etfs



Disclaimer

© 2023 London Stock Exchange Group plc and its applicable group undertakings (the "LSE Group"). The LSE Group includes (1) FTSE International Limited ("FTSE"), (2) Frank Russell Company ("Russell"), (3) FTSE Global Debt Capital Markets Inc. and FTSE Global Debt Capital Markets Limited (together, "FTSE Canada"), (4) FTSE Fixed Income Europe Limited ("FTSE FI Europe"), (5) FTSE Fixed Income LLC ("FTSE FI"), (6) The Yield Book Inc ("YB") and (7) Beyond Ratings S.A.S. ("BR"). All rights reserved.

FTSE Russell® is a trading name of FTSE, Russell, FTSE Canada, FTSE FI, FTSE FI Europe, YB and BR. "FTSE®", "Russell®", "FTSE Russell®", "FTSE4Good®", "ICB®", "The Yield Book®", "Beyond Ratings®" and all other trademarks and service marks used herein (whether registered or unregistered) are trademarks and/or service marks owned or licensed by the applicable member of the LSE Group or their respective licensors and are owned, or used under licence, by FTSE, Russell, FTSE Canada, FTSE FI, FTSE FI Europe, YB or BR. FTSE International Limited is authorised and regulated by the Financial Conduct Authority as a benchmark administrator.

All information is provided for information purposes only. All information and data contained in this publication is obtained by the LSE Group, from sources believed by it to be accurate and reliable. Because of the possibility of human and mechanical error as well as other factors, however, such information and data is provided "as is" without warranty of any kind. No member of the LSE Group nor their respective directors, officers, employees, partners or licensors make any claim, prediction, warranty or representation whatsoever, expressly, or impliedly, either as to the accuracy, timeliness, completeness, merchantability of any information or of results to be obtained from the use of FTSE Russell products, including but not limited to indexes, data and analytics, or the fitness or suitability of the FTSE Russell products for any particular purpose to which they might be put. Any representation of historical data accessible through FTSE Russell products is provided for information purposes only and is not a reliable indicator of future performance.

No responsibility or liability can be accepted by any member of the LSE Group nor their respective directors, officers, employees, partners or licensors for (a) any loss or damage in whole or in part caused by, resulting from, or relating to any error (negligent or otherwise) or other circumstance involved in procuring, collecting, compiling, interpreting, analysing, editing, transcribing, transmitting, communicating, or delivering any such information or data or from use of this document or links to this document or (b) any direct, indirect, special, consequential or incidental damages whatsoever, even if any member of the LSE Group is advised in advance of the possibility of such damages, resulting from the use of, or inability to use, such information.

No member of the LSE Group nor their respective directors, officers, employees, partners or licensors provide investment advice and nothing in this document should be taken as constituting financial or investment advice. No member of the LSE Group nor their respective directors, officers, employees, partners or licensors make any representation regarding the advisability of investing in any asset or whether such investment creates any legal or compliance risks for the investor. A decision to invest in any such asset should not be made in reliance on any information herein. Indexes cannot be invested in directly. Inclusion of an asset in an index is not a recommendation to buy, sell or hold that asset nor confirmation that any particular investor may lawfully buy, sell or hold the asset or an index containing the asset. The general information contained in this publication should not be acted upon without obtaining specific legal, tax, and investment advice from a licensed professional.

The information contained in this report should not be considered "research" as defined in recital 28 of the Commission Delegated Directive (EU) 2017/593 of 7 April 2016 supplementing Directive 2014/65/EU of the European Parliament and of the Council ("MiFID II") and is provided for no fee.

Past performance is no guarantee of future results. Charts and graphs are provided for illustrative purposes only. Index returns shown may not represent the results of the actual trading of investable assets. Certain returns shown may reflect back-tested performance. All performance presented prior to the index inception date is back-tested performance.

Back-tested performance is not actual performance, but is hypothetical. The back-test calculations are based on the same methodology that was in effect when the index was officially launched. However, back-tested data may reflect the application of the index methodology with the benefit of hindsight, and the historic calculations of an index may change from month to month based on revisions to the underlying economic data used in the calculation of the index.

This document may contain forward-looking assessments. These are based upon a number of assumptions concerning future conditions that ultimately may prove to be inaccurate. Such forward-looking assessments are subject to risks and uncertainties and may be affected by various factors that may cause actual results to differ materially. No member of the LSE Group nor their licensors assume any duty to and do not undertake to update forward-looking assessments.

No part of this information may be reproduced, stored in a retrieval system or transmitted in any form or by any means, electronic, mechanical, photocopying, recording or otherwise, without prior written permission of the applicable member of the LSE Group. Use and distribution of the LSE Group data requires a licence from FTSE, Russell, FTSE Canada, FTSE FI, FTSE FI Europe, YB, BR and/or their respective licensors.

About FTSE Russell (LSEG)

FTSE Russell is a leading global provider of index and benchmark solutions, spanning diverse asset classes and investment objectives. As a trusted investment partner we help investors make better-informed investment decisions, manage risk, and seize opportunities.

Market participants look to us for our expertise in developing and managing global index solutions across asset classes. Asset owners, asset managers, ETF providers and investment banks choose FTSE Russell solutions to benchmark their investment performance and create investment funds, ETFs, structured products, and index-based derivatives. Our clients use our solutions for asset allocation, investment strategy analysis and risk management, and value us for our robust governance process and operational integrity.

For over 35 years we have been at the forefront of driving change for the investor, always innovating to shape the next generation of benchmarks and investment solutions that open up new opportunities for the global investment community.

To learn more, visit lseg.com/ftse-russell; email info@ftserussell.com; or call your regional Client Service team office:

EMEA

+44 (0) 20 7866 1810

North America

+1 877 503 6437

Asia-Pacific

Hong Kong: +852 2164 3333

Tokyo: +81 3 6441 1430

Sydney: +61 (0) 2 7228 5659



**FTSE
RUSSELL**

An LSEG Business