

SOLUTION OVERVIEW

FTSE Impact Bond Index Series

Integrate impact investing into your fixed income strategy



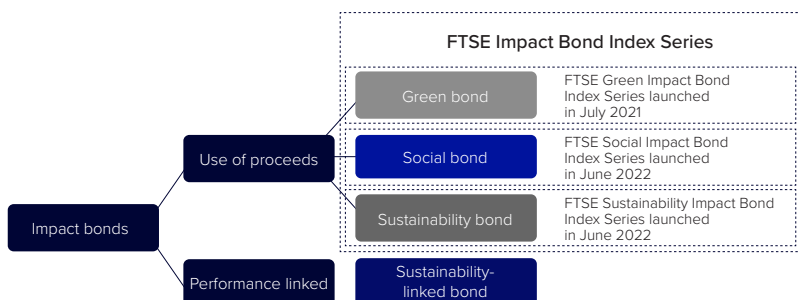
Overview

Enabling global debt investors to participate in this rapidly growing market while generating a positive environmental or social impact.

The Impact Bond market plays a crucial role in attracting and directing private capital towards improved social and environmental outcomes, notably through Green, Social and Sustainability (GSS) Bonds. Compared to traditional bonds, Impact Bonds have greater transparency in their use of proceeds and project impacts, providing a vehicle for investors who are looking for investments which yield direct climate, environmental or social benefits.

The Green Bond market has grown significantly since its inception in 2007, with cumulative issuance passing \$1 trillion in 2021. The social and sustainability impact bond market has also grown notably since 2020, in response to the COVID-19 pandemic.

Combining our index construction with LSEG's data, FTSE Russell is developing a comprehensive range of Social and Sustainability Impact Bond indices. Together with the FTSE Green Impact Bond Index (launched in 2021), the FTSE Impact Bond index series offers a complete set of tools and benchmarks to cover the rapidly growing GSS bond market.



Features

The FTSE Impact Bond index series provides global coverage of the rapidly growing green, social and sustainability (GSS) bond market.

Underpinning market integrity:

- Green: the Climate Bonds Initiative (CBI) identifies green bonds that are in line with the Paris Agreement.
- Social and Sustainability: Bonds within the series comply with ICMA Principles and Guidelines, with validation conducted by LSEG at both issuance and post-issuance stage.

Comprehensive: Based on established FTSE indices, including FTSE WGBI and FTSE WorldBIG, the series includes debt from over 20 countries denominated in a variety of currencies.

Accessible and replicable: The FTSE Global Impact Bond Index covers 24% of issues but more than 68% of the eligible GSS bond market by market weight, providing liquid and deep coverage of the global GSS bond market.

Rich content: A comprehensive set of hedged and unhedged sub-indices denominated in a variety of currencies, with more than eight years of history available.

Customised solutions: The index is fully customisable, based on a wide range of attributes including currency ratings, capping methodologies or diversification requirements.



**FTSE
RUSSELL**
An LSEG Business



**SUSTAINABLE
GROWTH**

The FTSE Impact Bond index series provides 16 flagship indices covering the global, Euro and US impact bond markets across green, social and sustainability sectors. The FTSE Impact Bond index series measures the performance of both investment-grade and high-yield, multi-currency GSS debt issued by governments, government agencies, supranationals, corporations and covered bond issuers. Sub-indices are available in any combination in the use of proceeds, currency, country, maturity, and rating.

Benchmarks are aligned to the Climate Bond Initiative (CBI) and the International Capital Markets Association (ICMA) guidelines to prevent ‘sustainability washing’.

The ICMA’s Green Bond Principles (GBP) and Social Bond Principles (SBP) have four core components (see below) to ensure transparency and governance of the green bond and social bond issuances, respectively. The ICMA’s Sustainability Bond Guidelines (SBG) confirm the relevance of these principles.

The FTSE Impact Bond index series leverages both CBI and LSEG data to identify bonds that are in compliance with the corresponding international guidelines. Specifically, CBI data are used to identify eligible Green Bonds whose use of proceeds are in line with the Paris Agreement. LSEG data are used to identify eligible Social and Sustainability Bonds that are in line with the core components of the ICMA SBP and/or SBG. Bonds’ index eligibility is checked via issuing documents such as a bond prospectus, or an external review such as a second-party opinion (SPO) report.

To comply with ICMA GBP or SBP, a bond has to meet the following requirements for **Use of Proceeds, Process for Project Evaluation and Selection, Management of Proceeds and Reporting.**

- **Use of Proceeds:** Both GBP and SBP recommend that green and/or social projects should be appropriately described in the legal documentation of the bond. All designated eligible green and/or social projects should provide clear green and/or social benefits, which will be assessed and, where feasible, quantified by the issuer. The eligible categories defined by GBP include, but are not limited to, climate change mitigation, climate change adaptation, biodiversity, natural resource conservation, in addition to pollution prevention and control. Examples of eligible social projects under SBP include affordable basic infrastructure, access to essential services, affordable housing, employment generation, food security and sustainable food systems, reduction of food loss and waste, and socioeconomic advancement and empowerment. LSEG data track and validate the actual proceeds allocation based on the issuer’s self-disclosure.
- **Process for Project Evaluation and Selection:** GBP and SBP both encourage issuers to provide information about the process for project evaluation and selection, which should be supplemented by an external reviewer.
- **Management of Proceeds:** the GBP and SBP require a high level of transparency and recommend that an issuer’s management of proceeds be supplemented by the use of an external auditor or reviewer.
- **Reporting:** Both GBP and SBP suggest the issuer should release a postissuance report at least annually. The report should include the lists of green and/or social projects to which the bond proceeds have been allocated, amounts allocated, and their expected green and/or social impact.

Each FTSE Impact Bond Index consists of the below variants based on the underlying index:

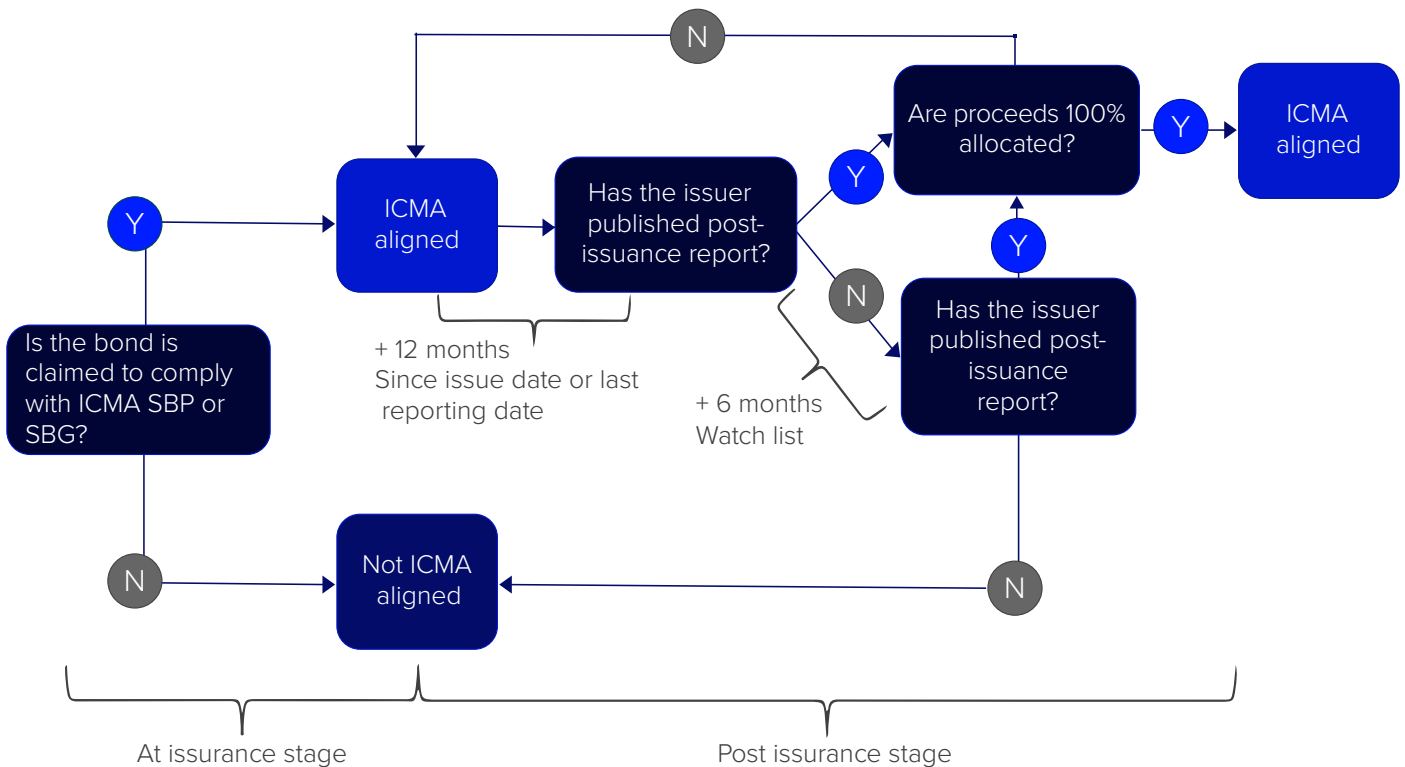
- **FTSE Global Impact Bond Index (Global Impact):** A multi-sector benchmark of investment-grade and high-yield multi-currency impact bonds, which is a superset of the other impact bond indices.
- **FTSE World Broad Investment-Grade Impact Bond Index (WorldBIG Impact):** Focuses on EUR, USD, GBP-denominated investment-grade impact bonds.
- **FTSE Euro Broad Investment-Grade Impact Bond Index (EuroBIG Impact):** Focuses on Euro-denominated investment-grade impact bonds.
- **FTSE US Broad Investment-Grade Impact Bond Index (USBIG Impact):** Focuses on US dollar-denominated investment-grade impact bonds issued in the US bond market.

Index review of post issuance reporting

On an ongoing basis, the availability of post issuance reports, which bond issuers have committed to comply with in accordance with relevant ICMA principles, will be confirmed for index inclusion purposes. The search for a post-issuance report will be conducted as the one-year anniversary of the issuance date approaches. For example, if a bond is issued on January 15, the search will take place in January of the following year.

The index treatment of post-issuance reports is as follows:

- Post issuance report is available
 - If the post issuance report is available and all net proceeds have been fully allocated, the bond will be considered to have fulfilled the reporting commitment permanently.
 - If the latest post issuance report is available and the proceeds have not been fully allocated, the bond will be subject to follow-up post issuance report confirmations on an annual basis until the proceeds are fully allocated.
- Post issuance report is not available
 - If its first post issuance report is not available immediately after the twelve-month since a bond was issued, it will be placed on a Watch List for an additional six months. For example, if a bond is issued on January 15, and the post issuance report is not available in January of the following year, the bond will remain index-eligible, subject to a subsequent search for a post-issuance report in July of the same year.
 - A bond will be removed from the index if the issuer fails to release a post-issuance report publicly in the 18-month period since the issue date. For example, if a bond is issued on January 15 and the post-issuance report is not available by the end of July of the following year, it will be removed from the index at the July month-end rebalance.
 - If an issuer fails to release a report for an 18-month period since its latest post-issuance report in which proceeds had been fully allocated, the bond will also be removed from the index.
 - When an index bond is removed, it is no longer considered eligible for inclusion in the future.



FTSE Impact Bond index series design criteria & methodology

	Global impact	WorldBIG impact	EuroBIG impact	USBIG impact	
Base date	December 31, 2013				
Green eligibility	Climate Bonds Initiative (CBI) Green Bond Database				
Social eligibility	ICMA Social Bond Principles (SBP) alignment by LSEG				
Sustainability criteria	ICMA Sustainability Bond Guidelines (SBG) alignment by LSEG				
Currency	AUD, CHF, CNH, CNY, EUR, GBP, JPY, USD	EUR, GBP, USD	EUR	USD	
Quality	IG, HY, NR*	IG	IG	IG	
Amount outstanding	AUD 100 million	EUR 500 million	EUR 500 million	USD 250 million	
	CHF 100 million	GBP 300 million			
	CNH 1 billion	USD 500 million			
	CNY 1 billion				
	EUR 500 million				
	GBP 200 million				
	JPY 20 billion				
	USD 250 million				
Minimum maturity	At least one year to maturity				
Weighting	Market capitalisation				
Rebalancing	Once a month at the end of the month				
Calculation frequency	Daily				
Settlement date	Monthly – Settlement is on the last calendar day of the month. Daily – Same-day settlement except if the last business day of the month is not the last calendar day of the month; then, settlement is on the last calendar day of the month.				
Fixing date	Each month, the upcoming month's index constituents are "fixed" on the profile fixing date. Each year's scheduled fixing dates are published on the website.				
Base index	20 Broad Fixed Income indices	World Broad Investment-Grade Bond Index	Euro Broad Investment-Grade Bond Index	US Broad Investment-Grade Bond Index	
June 2022 Constituents	Impact	1563	973	689	230
	Green impact	1053	636	480	138
	Social impact	229	134	111	19
	Sustainability impact	281	203	98	73

* No minimum S&P or Moody's rating requirements, non-rated bonds are included, defaulted bonds are excluded.

Top 10 issuers by market value in FTSE Global Impact Bond Index

Issuers	Number of bonds	Par amount*	Market value*	Market value (%)	Sector	Country
Top 10 Green Impact Bond Issuers	93	251.46	222.77	16.55%		
FRANCE, REPUBLIC OF (GOVERNMENT)	2	48.34	43.92	3.26%	Domestic Sovereign	France
KFW	14	34.85	32.21	2.39%	Agency	Germany
EUROPEAN INVESTMENT BANK	23	31.90	29.60	2.20%	Supranational	Supranational
GERMANY, FEDERAL REPUBLIC OF (GOVERNMENT)	4	28.92	25.32	1.88%	Domestic Sovereign	Germany
EUROPEAN UNION	2	24.64	20.36	1.51%	Supranational	Supranational
UNITED KINGDOM OF GREAT BRITAIN AND NORTHERN IRELAND (GOVERNMENT)	2	21.12	18.06	1.34%	Domestic Sovereign	United Kingdom
SOCIETE DU GRAND PARIS	9	21.43	16.06	1.19%	Agency	France
TENNET HOLDING BV	22	16.71	15.27	1.13%	Utility	Netherlands
ENGIE SA	14	12.37	11.20	0.83%	Utility	France
BELGIUM, KINGDOM OF (GOVERNMENT)	1	11.17	10.75	0.80%	Domestic Sovereign	Belgium
Top 10 Social Impact Bond Issuers	113	243.78	212.63	15.80%		
EUROPEAN UNION	11	96.02	79.12	5.88%	Supranational	Supranational
CAISSE AMORTISSEMENT DE LA DETTE SOCIALE	17	70.67	64.36	4.78%	Agency	France
UNEDIC	10	30.00	26.04	1.93%	Agency	France
NEDERLANDSE WATERSCHAPSBANK NV	11	11.55	10.29	0.76%	Agency	Netherlands
EAST NIPPON EXPRESSWAY CO LTD	34	8.78	8.73	0.65%	Industrial	Japan
CHILE GOVERNMENT	7	10.15	8.17	0.61%	Foreign Sovereign	Chile
WEST NIPPON EXPRESSWAY CO LTD	8	4.51	4.50	0.33%	Industrial	Japan
KOREA HOUSING FINANCE CORP	6	4.34	4.15	0.31%	Covered	South Korea
CAIXABANK SA	4	4.29	4.03	0.30%	Finance	Spain
CASSA DEPOSITI E PRESTITI SPA	5	3.48	3.25	0.24%	Agency	Italy
Top 10 Sustainability Impact Bond Issuers	89	193.46	174.01	12.93%		
INTERNATIONAL BANK FOR RECONSTRUCTION AND DEVELOPMENT	36	103.57	94.51	7.02%	Supranational	Supranational
INTERNATIONAL DEVELOPMENT ASSOCIATION	12	21.68	19.34	1.44%	Supranational	Supranational
NORTH-RHINE WESTPHALIA, STATE OF	9	16.34	14.31	1.06%	Regional Government	Germany
INTER-AMERICAN DEVELOPMENT BANK	4	10.01	9.00	0.67%	Supranational	Supranational
BNG BANK NV	8	9.77	8.73	0.65%	Agency	Netherlands
AGENCE FRANCAISE DE DEVELOPPEMENT EPIC	4	7.50	6.84	0.51%	Agency	France
ASIAN INFRASTRUCTURE INVESTMENT BANK	3	6.76	6.28	0.47%	Supranational	Supranational
EUROPEAN INVESTMENT BANK	6	6.08	5.20	0.39%	Supranational	Supranational
CHILE GOVERNMENT	4	6.00	5.17	0.38%	Foreign Sovereign	Chile
ALPHABET INC	3	5.75	4.62	0.34%	Finance	United States
Global Impact Bond Index	1,563	1,495.59	1,346.02	100.00%		

* Data as of 31 May 2022. In USD billions.

Disclaimer

© 2023 London Stock Exchange Group plc and its applicable group undertakings (the "LSE Group"). The LSE Group includes (1) FTSE International Limited ("FTSE"), (2) Frank Russell Company ("Russell"), (3) FTSE Global Debt Capital Markets Inc. and FTSE Global Debt Capital Markets Limited (together, "FTSE Canada"), (4) FTSE Fixed Income Europe Limited ("FTSE FI Europe"), (5) FTSE Fixed Income LLC ("FTSE FI"), (6) The Yield Book Inc ("YB") and (7) Beyond Ratings S.A.S. ("BR"). All rights reserved.

FTSE Russell® is a trading name of FTSE, Russell, FTSE Canada, FTSE FI, FTSE FI Europe, YB and BR. "FTSE", "Russell", "FTSE Russell", "FTSE4Good", "ICB", "The Yield Book", "Beyond Ratings" and all other trademarks and service marks used herein (whether registered or unregistered) are trademarks and/or service marks owned or licensed by the applicable member of the LSE Group or their respective licensors and are owned, or used under licence, by FTSE, Russell, FTSE Canada, FTSE FI, FTSE FI Europe, YB or BR. FTSE International Limited is authorised and regulated by the Financial Conduct Authority as a benchmark administrator.

All information is provided for information purposes only. All information and data contained in this publication is obtained by the LSE Group, from sources believed by it to be accurate and reliable. Because of the possibility of human and mechanical error as well as other factors, however, such information and data is provided "as is" without warranty of any kind. No member of the LSE Group nor their respective directors, officers, employees, partners or licensors make any claim, prediction, warranty or representation whatsoever, expressly or impliedly, either as to the accuracy, timeliness, completeness, merchantability of any information or of results to be obtained from the use of FTSE Russell products, including but not limited to indexes, data and analytics, or the fitness or suitability of the FTSE Russell products for any particular purpose to which they might be put. Any representation of historical data accessible through FTSE Russell products is provided for information purposes only and is not a reliable indicator of future performance.

No responsibility or liability can be accepted by any member of the LSE Group nor their respective directors, officers, employees, partners or licensors for (a) any loss or damage in whole or in part caused by, resulting from, or relating to any error (negligent or otherwise) or other circumstance involved in procuring, collecting, compiling, interpreting, analysing, editing, transcribing, transmitting, communicating or delivering any such information or data or from use of this document or links to this document or (b) any direct, indirect, special, consequential or incidental damages whatsoever, even if any member of the LSE Group is advised in advance of the possibility of such damages, resulting from the use of, or inability to use, such information.

No member of the LSE Group nor their respective directors, officers, employees, partners or licensors provide investment advice and nothing in this document should be taken as constituting financial or investment advice. No member of the LSE Group nor their respective directors, officers, employees, partners or licensors make any representation regarding the advisability of investing in any asset or whether such investment creates any legal or compliance risks for the investor. A decision to invest in any such asset should not be made in reliance on any information herein. Indexes cannot be invested in directly. Inclusion of an asset in an index is not a recommendation to buy, sell or hold that asset nor confirmation that any particular investor may lawfully buy, sell or hold the asset or an index containing the asset. The general information contained in this publication should not be acted upon without obtaining specific legal, tax, and investment advice from a licensed professional.

The information contained in this report should not be considered "research" as defined in recital 28 of the Commission Delegated Directive (EU) 2017/593 of 7 April 2016 supplementing Directive 2014/65/EU of the European Parliament and of the Council ("MiFID II") and is provided for no fee.

Past performance is no guarantee of future results. Charts and graphs are provided for illustrative purposes only. Index returns shown may not represent the results of the actual trading of investable assets. Certain returns shown may reflect back-tested performance. All performance presented prior to the index inception date is back-tested performance. Back-tested performance is not actual performance, but is hypothetical. The back-test calculations are based on the same methodology that was in effect when the index was officially launched. However, back-tested data may reflect the application of the index methodology with the benefit of hindsight, and the historic calculations of an index may change from month to month based on revisions to the underlying economic data used in the calculation of the index.

This document may contain forward-looking assessments. These are based upon a number of assumptions concerning future conditions that ultimately may prove to be inaccurate. Such forward-looking assessments are subject to risks and uncertainties and may be affected by various factors that may cause actual results to differ materially. No member of the LSE Group nor their licensors assume any duty to and do not undertake to update forward-looking assessments.

No part of this information may be reproduced, stored in a retrieval system or transmitted in any form or by any means, electronic, mechanical, photocopying, recording or otherwise, without prior written permission of the applicable member of the LSE Group. Use and distribution of the LSE Group data requires a licence from FTSE, Russell, FTSE Canada, FTSE FI, FTSE FI Europe, YB, BR and/or their respective licensors.

About FTSE Russell

FTSE Russell is a leading global provider of index and benchmark solutions, spanning diverse asset classes and investment objectives. As a trusted investment partner we help investors make better-informed investment decisions, manage risk, and seize opportunities.

Market participants look to us for our expertise in developing and managing global index solutions across asset classes. Asset owners, asset managers, ETF providers and investment banks choose FTSE Russell solutions to benchmark their investment performance and create investment funds, ETFs, structured products, and index-based derivatives. Our clients use our solutions for asset allocation, investment strategy analysis and risk management, and value us for our robust governance process and operational integrity.

For over 35 years we have been at the forefront of driving change for the investor, always innovating to shape the next generation of benchmarks and investment solutions that open up new opportunities for the global investment community.

To learn more, visit lse.com/ftse-russell; email info@ftserussell.com; or call your regional Client Service team office:

EMEA +44 (0) 20 7866 1810

North America +1 877 503 6437

Asia-Pacific

Hong Kong +852 2164 3333

Tokyo +81 (3) 6441 1430

Sydney +61 (0)2 7228 5659



**FTSE
RUSSELL**
An LSEG Business



**SUSTAINABLE
GROWTH**